

# Sarle Drain

## Board of Determination

Tittabawassee Township Offices

145 S. Second Street, Freeland MI

Tuesday, September 21, 2021

6:00 PM



**Brian J. Wendling**

**Saginaw County Public Works Commissioner**

# Meeting Agenda

- I. Introduction
- II. Opening of Board of Determination Meeting
- III. Outline of the Board of Determination Procedure
- IV. Inspection Report
- V. Public Testimony - (3 minutes per person.)
- VI. Vote of Board of Determination
- VII. Appeal Procedures and Closing Comments
- VIII. Adjournment

# Role of the B.O.D.

- The Board of Determination's role is to make one decision:
  1. Whether the project is necessary based on public health, convenience or welfare
- The Board of Determination DOES NOT decide:
  - ▣ The scope of the project
  - ▣ The cost of the project
  - ▣ How much property owners and municipalities are assessed for the project

# Public Comment

- The speaking order will be on a first come, first served basis. Petitioner will have a chance to speak first.
- State your full name and address. Spell your last name for the court reporter.
- Limit comments to 3 minutes.

# Public Comment (cont.)

- Briefly state your position on the petition for the Sarle Drain. For example: “I support the petition for the Sarle Drain because . . .” or “I oppose the petition for the Sarle Drain because . . . .”
- Remember to stay on topic! Comments for tonight’s meeting are limited to the current petition for the Sarle Drain only.
- The Public Works Commissioner’s staff will gladly speak with you on other topics after the conclusion of tonight’s meeting.

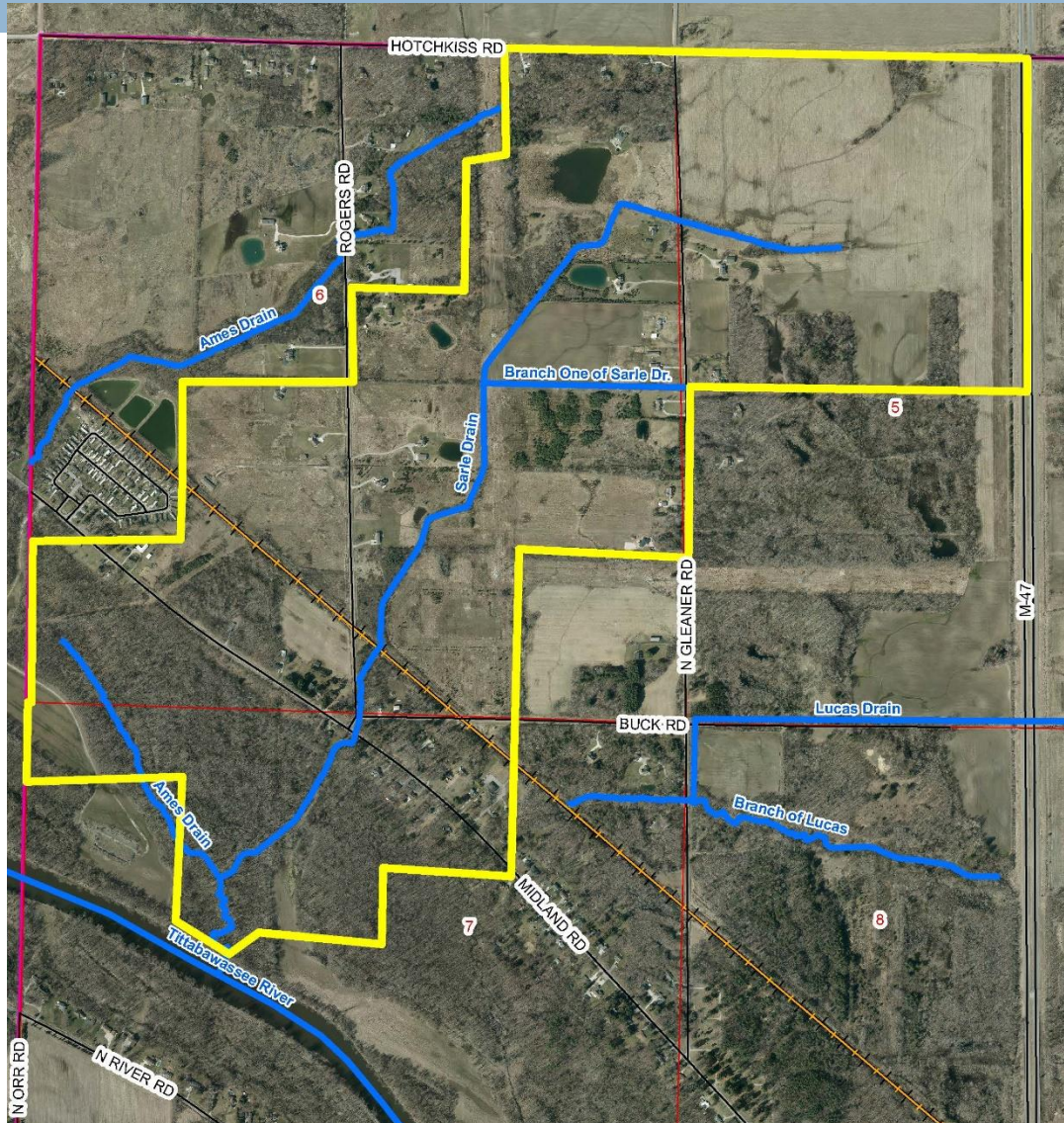
# Drain Facts

- Sarle Drain was established as a county drain in 1920.
- 2014 –Removed a few trees/long jams.
- 2019 – Completed drain inspection.
- The current petition was filed on March 5, 2020. It was circulated by Wayne King and was signed by 7 freeholders.

# Drain Facts Continued

- Location of Sarle Drain
  - ▣ See Map
  - ▣ Approximately 10,080 feet long ( 1.9 miles)
  - ▣ Watershed area: Approx. 620 acres
- What is the drainage district?
  - ▣ Lands that contributes storm water to drain
  - ▣ Drainage District serves as the special assessment district
  - ▣ Sarle Drain Drainage District includes:
    - Tittabawassee Township
    - Michigan Department of Transportation
    - Saginaw County
    - Landowners – Approximately 67 parcels

# Drainage District Map



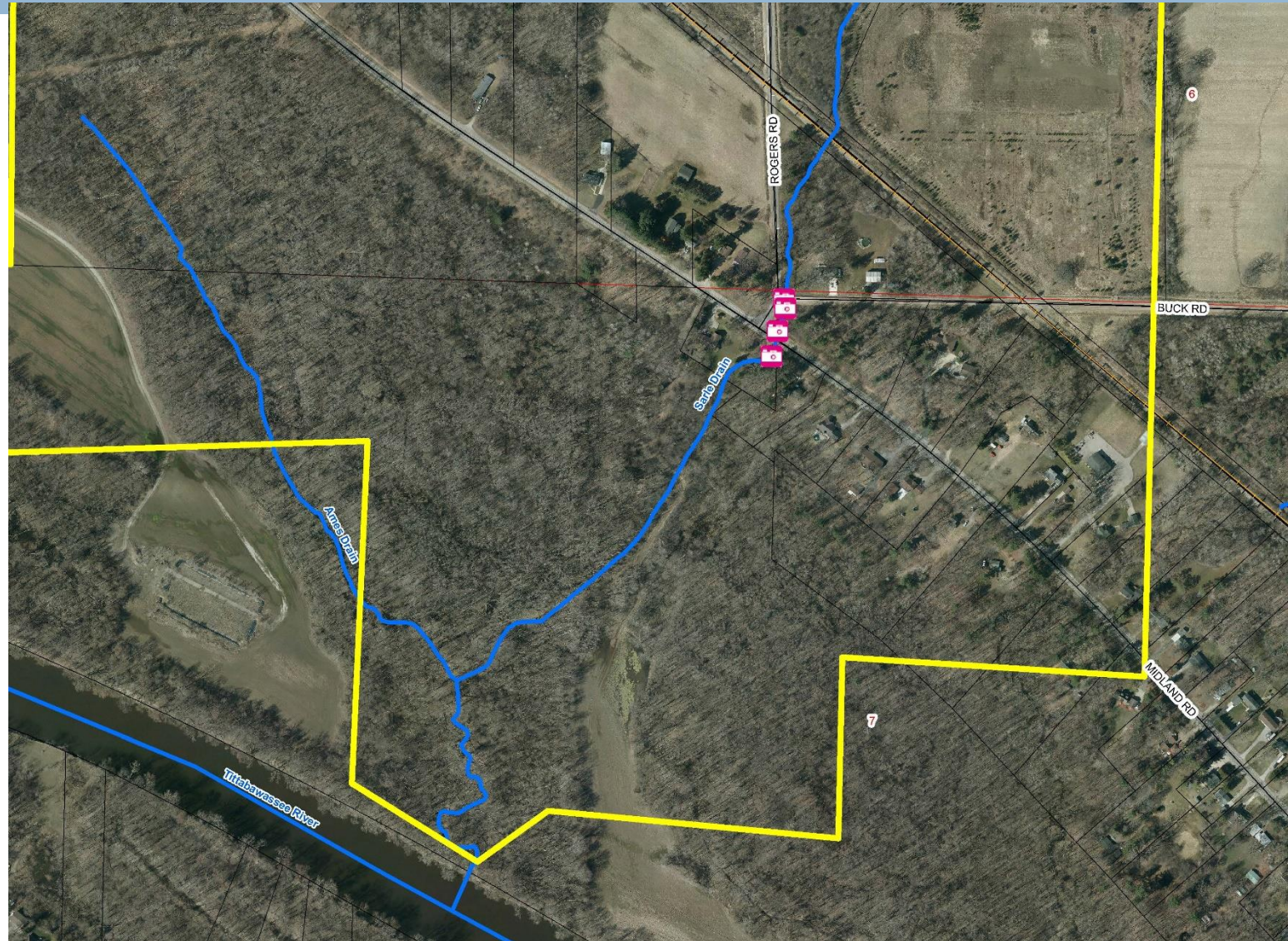
Yellow line  
= historical  
drainage  
district  
boundary  
from 1920



# Drain Inspection

- On September 13, 2021 a field review of the Drain (inspection from the road crossings only) was completed as a result of the petition filed with the Public Works Commissioner. The following was observed:
  - It appears that most of the drain has trees in and along it most of the way. There was good flow in the drain, except for the very upstream section.

# Drain Inspection Continued

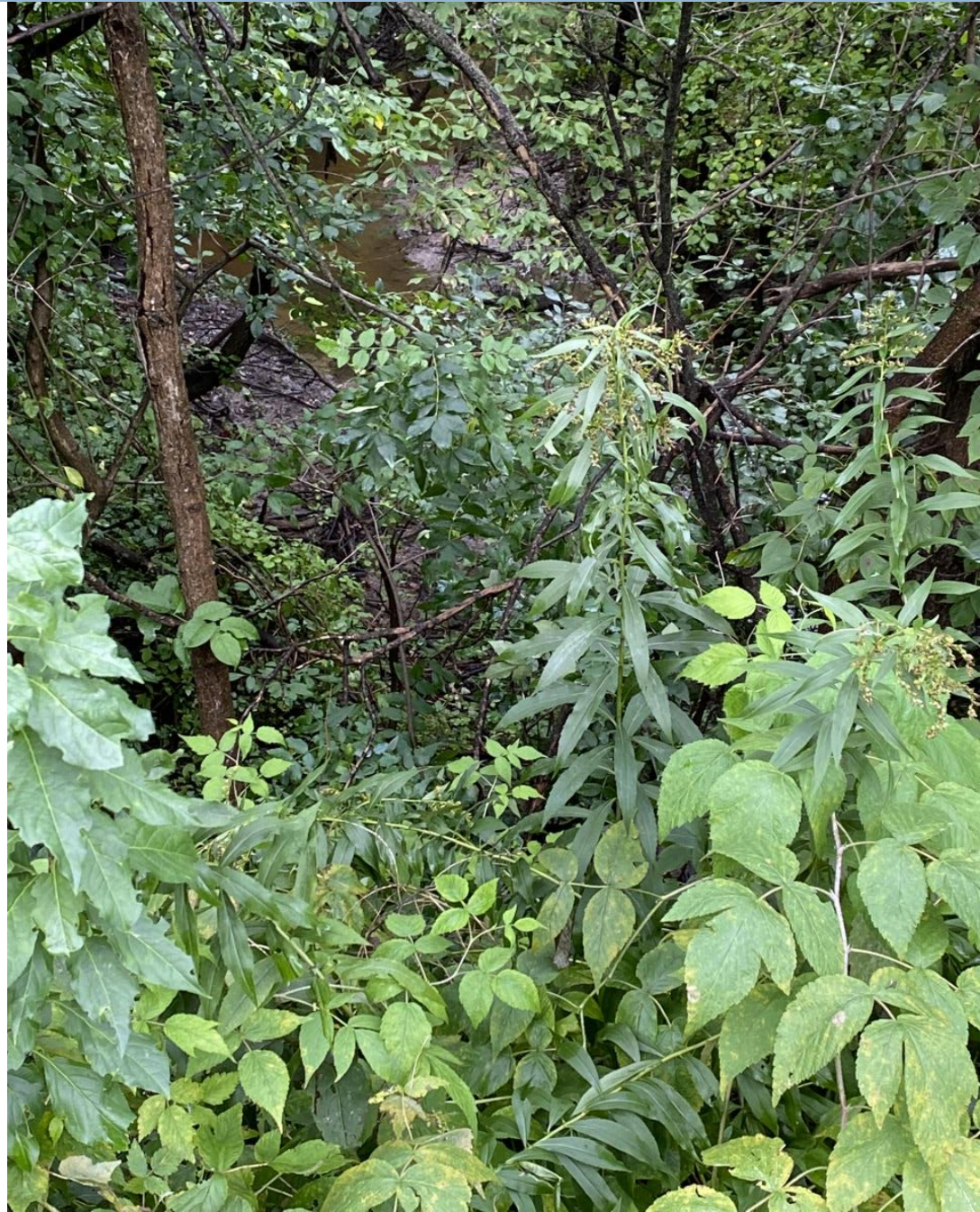




## Looking Downstream (south-west) from Midland Road

Trees & brush  
in/along drain,  
good water flow

Large concrete  
culvert -96-inch  
(8-foot) diameter  
under road





# Looking Upstream (North-East) from Midland Road

Trees in/along  
drain, good  
water flow





# Looking downstream (South) from Buck Road

Trees\brush along  
drain; good  
water flow





# Looking upstream (North) from Buck Road

Trees & brush in  
and along drain





## Upstream End (North) of Buck Road

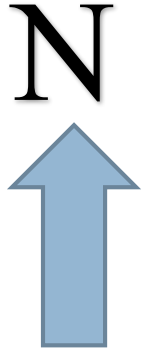
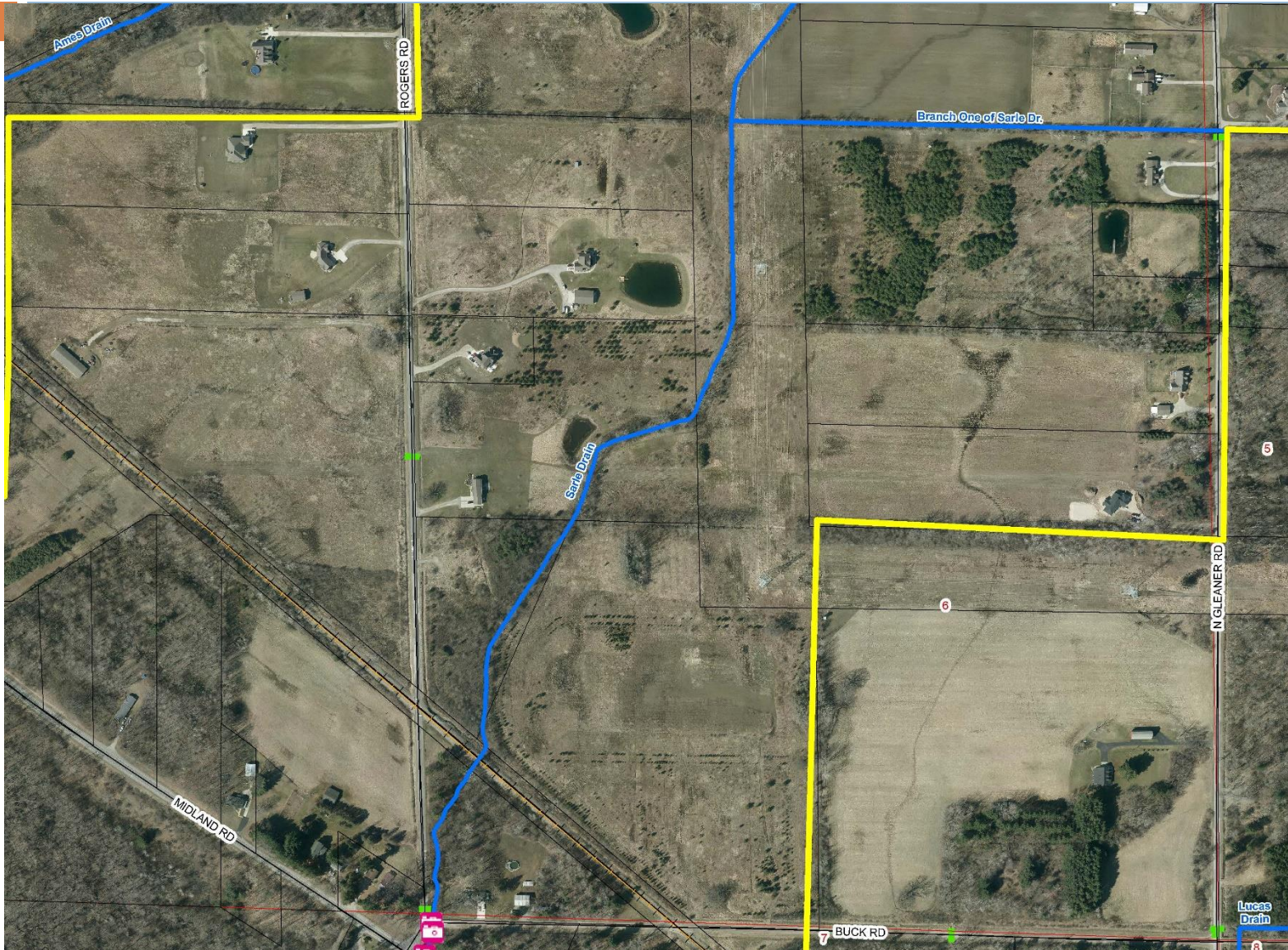
Upstream end of crossing – 72-inch (6-foot) diameter metal pipe

\*Notes from Road Commission show 2 culverts crossing here, 6-foot diameter & 5-foot diameter



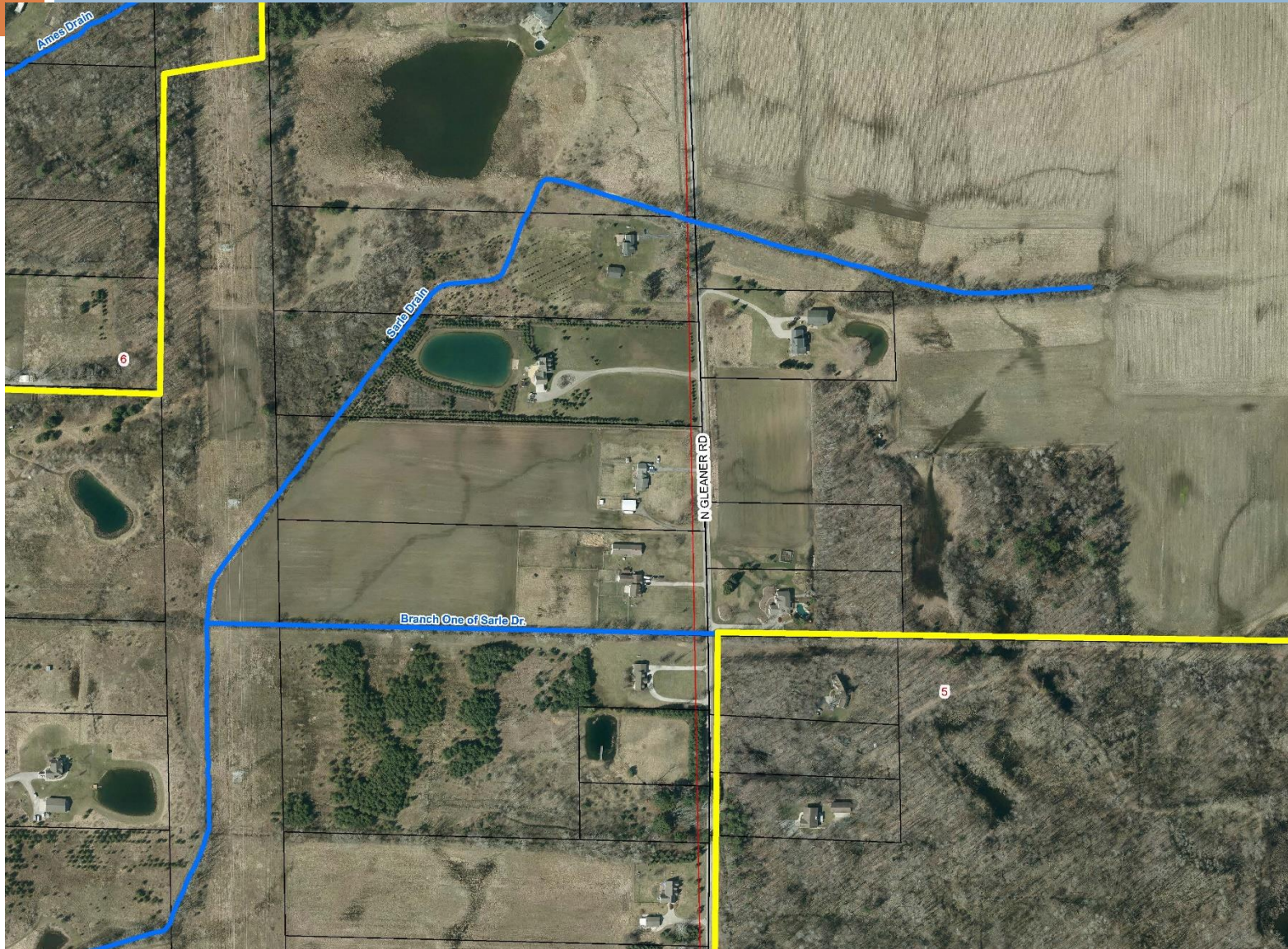


# Drain Inspection Continued





# Drain Inspection Continued





# Looking downstream (West) from Gleaner Road

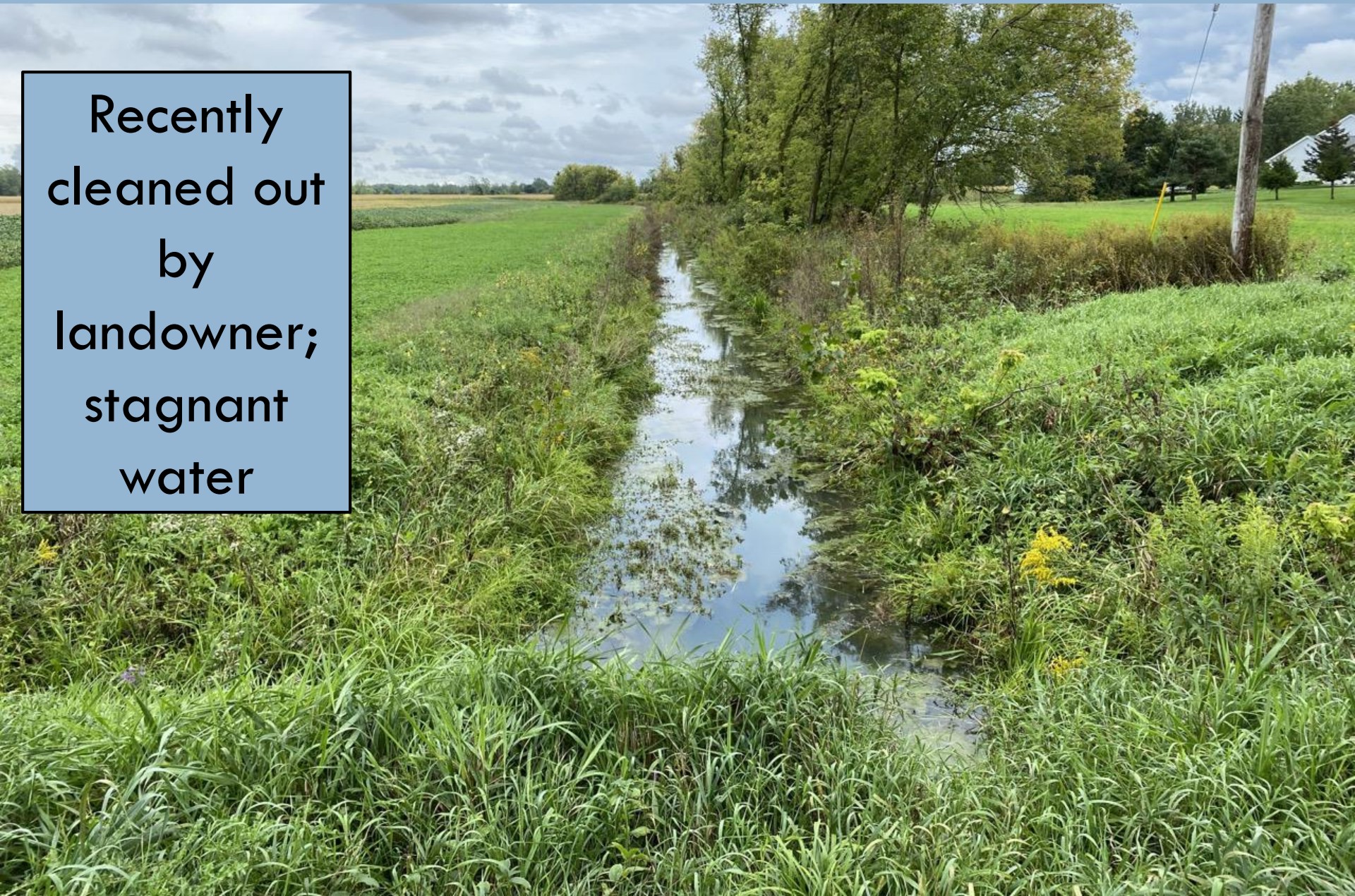
Trees & brush in  
and along drain





# Looking upstream (East) from Gleaner Road

Recently  
cleaned out  
by  
landowner;  
stagnant  
water





## Upstream End (East) Gleaner Road

48-inch  
(4-feet)  
diameter  
metal pipe





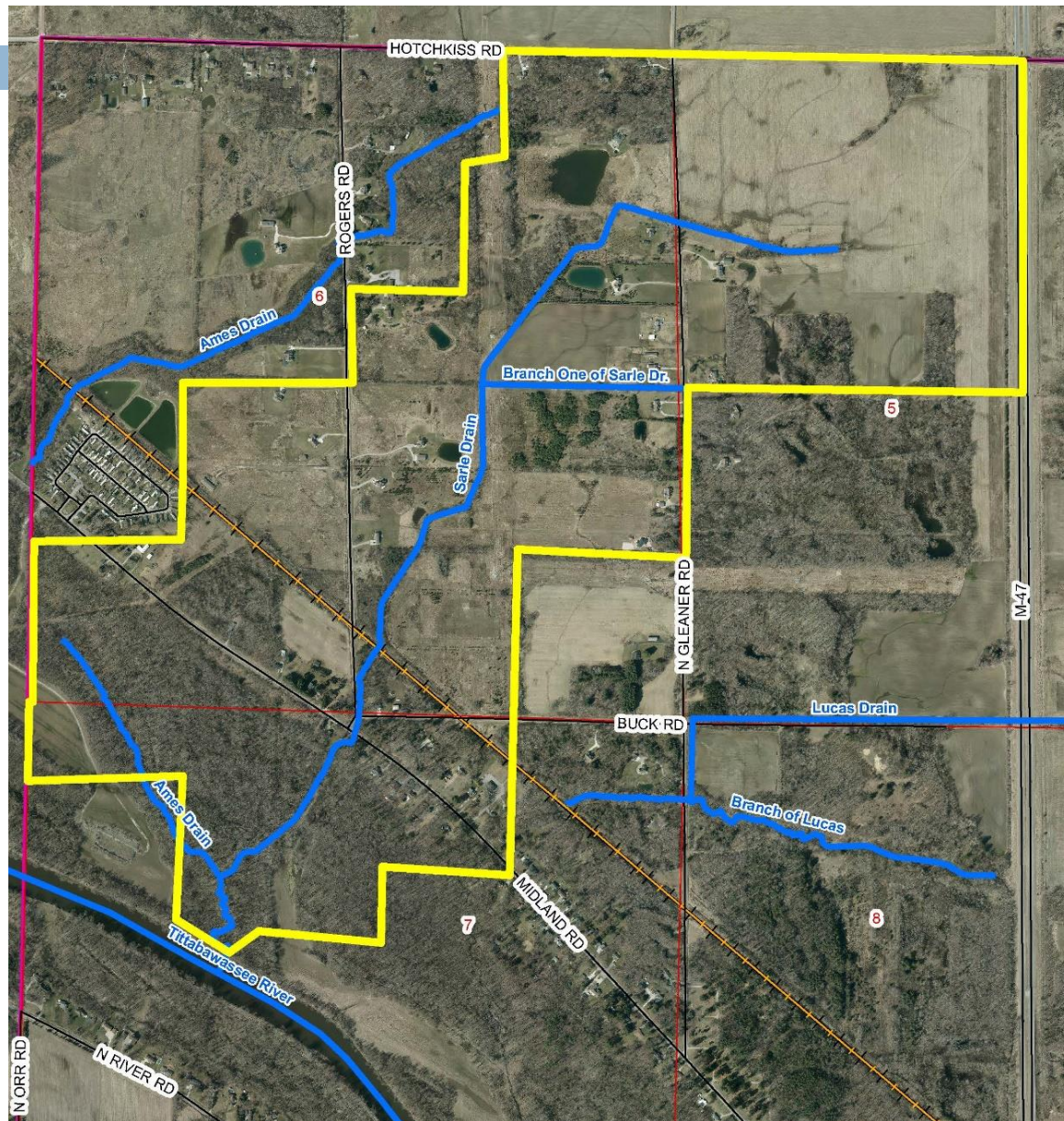
# Summary of Drain Finances

- ❑ Drain account currently has approximately \$815.
- ❑ 2014 – Spent approx. \$200 remove tree down in drain at a culvert
- ❑ 2019 – Spend approx. \$250 on drain inspection





# Location Of Drain



# Meeting Agenda

- ~~I. Introductions~~
- ~~II. Opening of Board of Determination Meeting~~
- ~~III. Outline of the Board of Determination Procedure~~
- ~~IV. Inspection Report~~
- V. Public Testimony - (3 minutes per person.)
- VI. Vote of Board of Determination
- VII. Appeal Procedures and Closing Comments
- VIII. Adjournment

# Appeal Procedures – Section 280.72a



Whenever the board of determination finds by majority vote of the whole number of members that the drain is or is not necessary, any person feeling aggrieved by the determination may institute an action in the circuit court for the county in which the real property is located for a determination of necessity. The action shall be filed by the person aggrieved within 10 days after the determination of necessity or no necessity by the board of determination.