

# Gradt Tile Drain

## Board of Determination

Virtual Meeting

December 16th, 2020

6:00 PM



**Brian J. Wendling**

**Saginaw County Public Works Commissioner**

# Meeting Agenda



- I. Introduction
- II. Opening of Board of Determination Meeting
- III. Outline of the Board of Determination Procedure
- IV. Inspection Report
- V. Public Testimony - (3 minutes per person)
- VI. Vote of Board of Determination
- VII. Appeal Procedures and Closing Comments
- VIII. Adjournment

# Role of the B.O.D.

- The Board of Determination's role is to make one decision:
  1. Whether the project is necessary
- The Board of Determination DOES NOT decide:
  - ▣ The scope of the project
  - ▣ The cost of the project
  - ▣ How much property owners and municipalities are assessed for the project

Information on these topics will be made available at a later date. Please call the Saginaw County Public Works office during regular business hours

M-F, 8AM - 5PM

# Public Comment



- ❑ The speaking order will be on a first come, first served basis.
- ❑ State your full name and address. Spell your last name.
- ❑ Limit comments to 3 minutes.
- ❑ Once all have been given the opportunity to speak, follow-up comments will be accepted.

# Public Comment (cont.)

- Briefly state your position on the petition for the Gradt Tile Drain. For example: “I support the petition for the Gradt Tile Drain because . . .” or “I oppose the petition for the Gradt Tile Drain because . . . .”
- Remember to stay on topic! Comments for tonight’s meeting are limited to the current petition for the Gradt Tile Drain only.
  - The Public Works Commissioner will gladly speak with you on other topics. Please call the Saginaw County Public Works office during regular business hours  
M-F, 8AM - 5PM

# Drain Background

- The Gradt Tile Drain was established in 1923 and constructed as a tile drain
  - ▣ Approximately 1,465 feet of 12-inch tile with a C.B. at the upper end and a drain inlet on the golf course.
  - ▣ The Gradt Tile drain has a 33-foot drain right-of-way.
- Where is the Gradt Tile Drain?
  - ▣ Section 34, Thomas Township
  - ▣ Along west side of Leddy Road
  - ▣ Outlets Williams Creek Drain (on Valley View Farms GC)
  - ▣ 12- Inch Tile Drain Beginning at the N. 1/4 corner of Section 34 on the east side of Leddy Road

# Drain Background

- Where is the Gradt Tile Drain? cont.
  - ▣ Tile traverses southwesterly through residential parcels and Valley View Farms Golf Course and outlets to Williams Creek Drain near hole No. 7.
  - ▣ Total length of approximately 1,465 Feet
  - ▣ Services approximately 24 parcels
  - ▣ Approximately 75 Acres



# Where is the Gradt Tile drain?





# Drainage Inspection

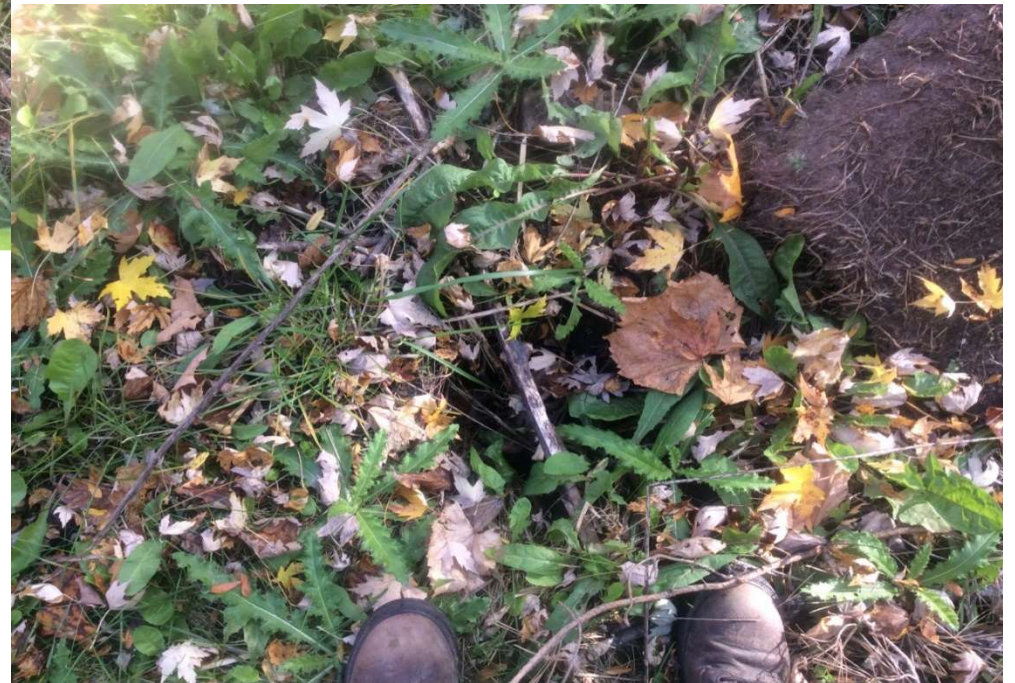
- In 2016 SGI performed a study of the drainage along Luddy Road for the SCRC.
  - Obtained and reviewed SCPWC records of the Grady Tile Drain.
  - Inspected the route of the drain
    - Sink holes along the entire length of the tile
    - Large mature trees growing on top of the tile
    - Potential encroachments in the drain right-of-way include:
      - Home built within drain right-of-way
      - Drain field constructed within drain right-of-way
      - Drain traverses through Valley View Farms Golf Course
    - Two catch basins were located, limiting drainage function and ability to maintain

# Drainage Inspection



Sink hole along the route of the  
Gradt Tile Drain

Catch Basin at upper end of  
Gradt Tile Drain on the east  
side of Leddy Road





# Drainage Inspection



Sink holes along the route of the  
Gradt Tile Drain





# Drainage Inspection



Catch Basin on golf  
course property

Sink hole along the route of the Gradt Tile  
Drain





# Drainage Inspection



Standing water in low area of rear lots west of Leddy Road. Picture is looking east towards Leddy Road. Possible septic field encroachment.

Looking west along the route of the Gradt Tile Drain



# Drainage Inspection

- Recommended replacement and improvement of the drain to meet the current land use needs due to:
  - Age of the drain
  - Field observations
  - Limited ability to maintain



# Recommended Replacement



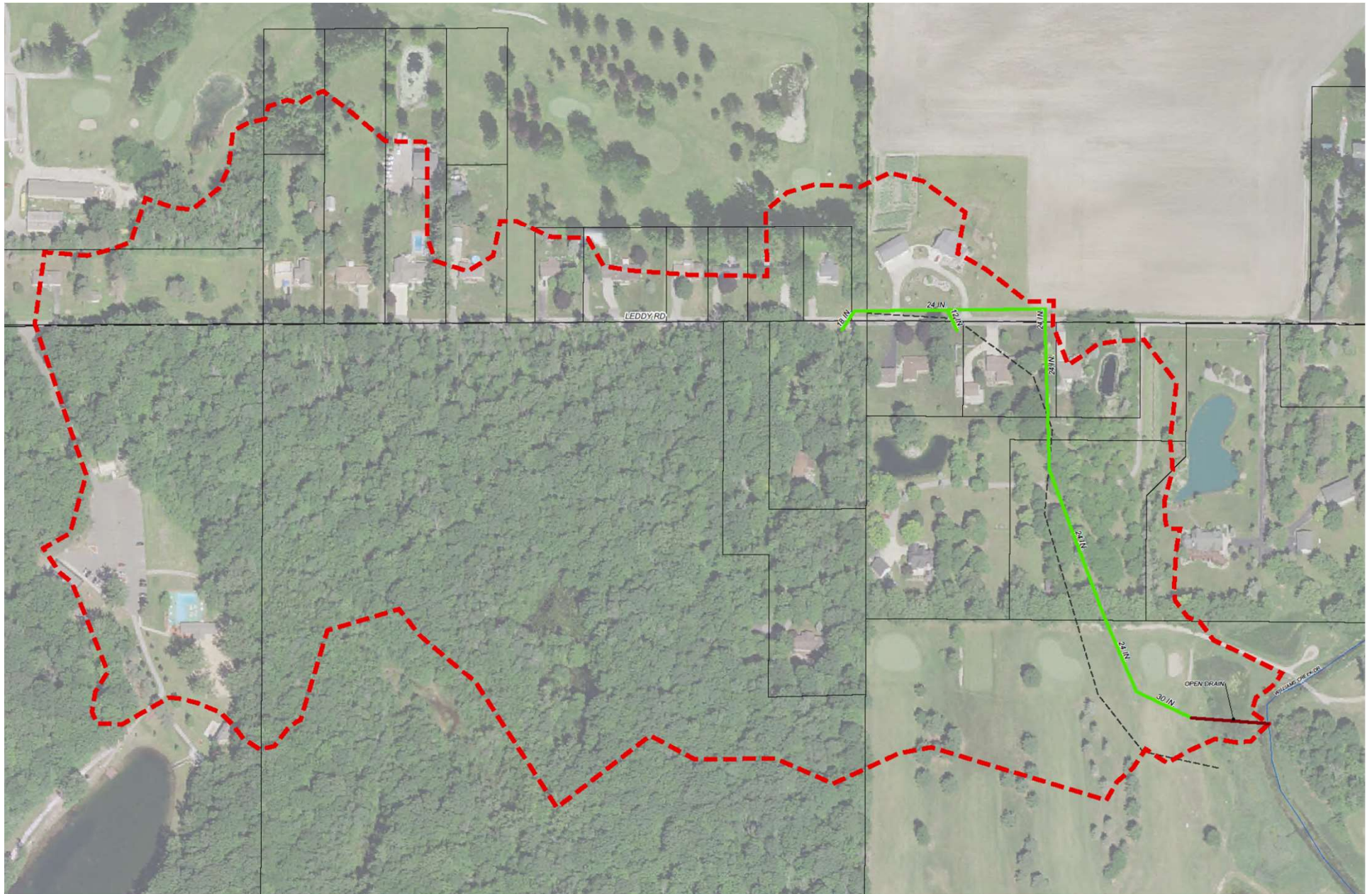


# Drainage District

- What is the drainage district?

- Lands that contribute storm water to drain
- Drainage District serves as the special assessment district
- Gradt Tile Drain Drainage District includes:
  - Thomas Township
  - Saginaw County
  - Landowners – Approximately 24 parcels
  - Approximately 75 Acres
- SGI reviewed and re-delineated the drainage boundary of the Gradt Tile Drain during the 2016 Inspection.
- Drainage District Boundary was officially updated in 2018 as part of the 197 Day of Review process.

# Gradt Tile Drain Drainage District



## Recent Flooding-Leddy Road, Looking North towards M-46





## Recent Flooding-Leddy Road, Looking Northeast



## Recent Flooding-Leddy Road, Looking East



## Recent Rear Lot Flooding-Looking East Towards Leddy Road



## **Recent Flooding-East Side Leddy Road, Looking North**





## Recent Flooding-Leddy Road Looking South



# Meeting Agenda



- I. Introductions
- II. Opening of Board of Determination Meeting
- III. Outline of the Board of Determination Procedure
- IV. Inspection Report
- V. Public Testimony - (3 minutes per person)
- VI. Vote of Board of Determination
- VII. Appeal Procedures and Closing Comments
- VIII. Adjournment