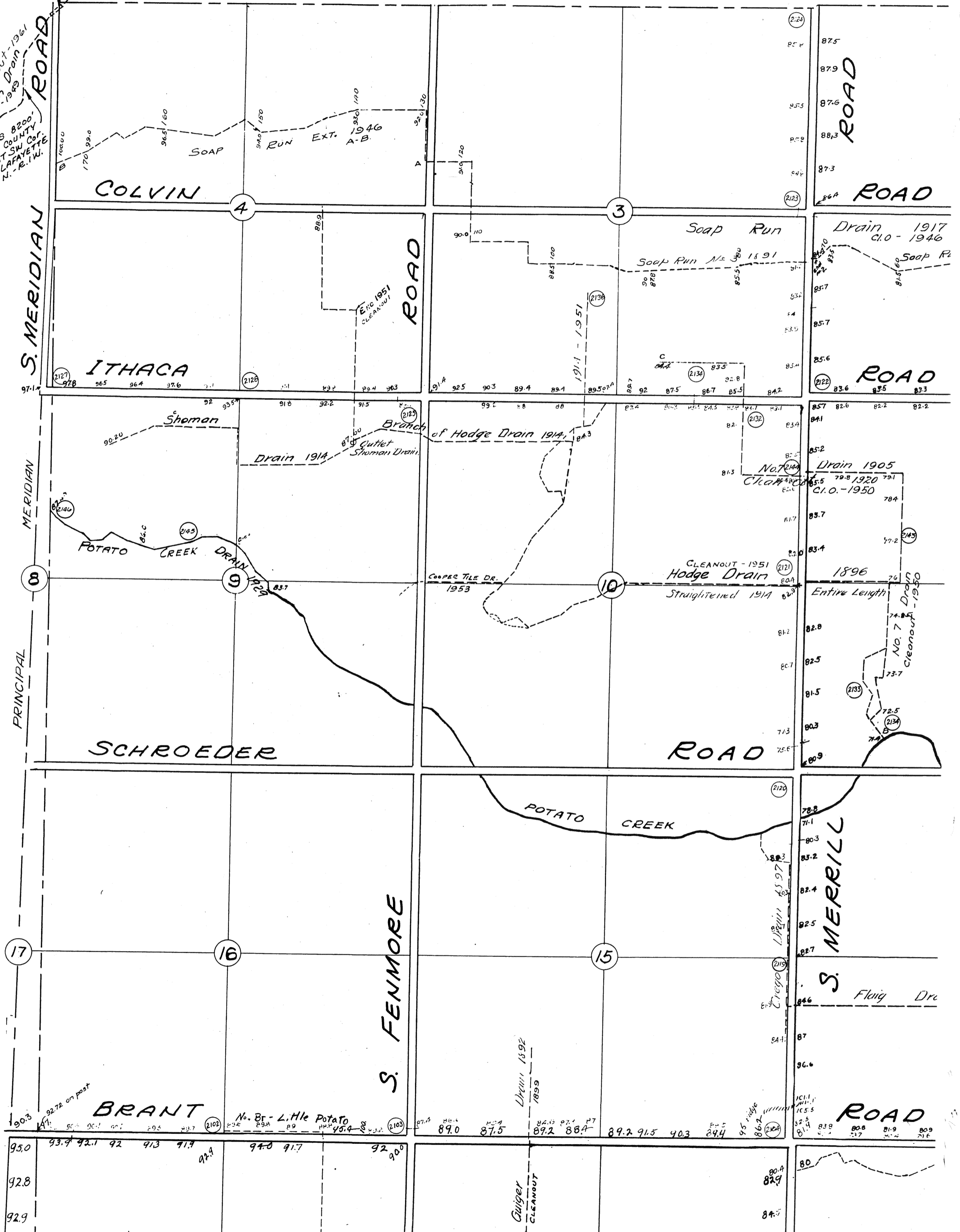


NW 1/4 MARION TWP.

7B

T.10N.-R.1E.

No. 91 Borton Drain  
Cleanout - 1961  
Cleanout - 1963  
DRAIN EXTENDS 8200'  
INTO GRATIOT COUNTY  
AND ENDS AT SW COR.  
OF SEC. 36 LAFAYETTE  
TWP. T.11N.-R.1W.



Revised 11-77 C.W.M.

B-3364-26