

Parker Swamp Drain

Board of Determination

Freeland High School Performing Arts Center

Tuesday, July 27, 2021

6:00 PM



Brian J. Wendling

Saginaw County Public Works Commissioner

Meeting Agenda



- I. Introduction
- II. Opening of Board of Determination Meeting
- III. Outline of the Board of Determination Procedure
- IV. Inspection Report
- V. Public Testimony - (3 minutes per person.)
- VI. Vote of Board of Determination
- VII. Appeal Procedures and Closing Comments
- VIII. Adjournment

Role of the B.O.D.

- The Board of Determination's role is to make one decision:
 1. Whether the project is necessary based on public health, convenience or welfare
- The Board of Determination DOES NOT decide:
 - ▣ The scope of the project
 - ▣ The cost of the project
 - ▣ How much property owners and municipalities are assessed for the project

Public Comment

- The speaking order will be on a first come, first served basis. Petitioner will have a chance to speak first.
- State your full name and address. Spell your last name for the court reporter.
- Limit comments to 3 minutes.

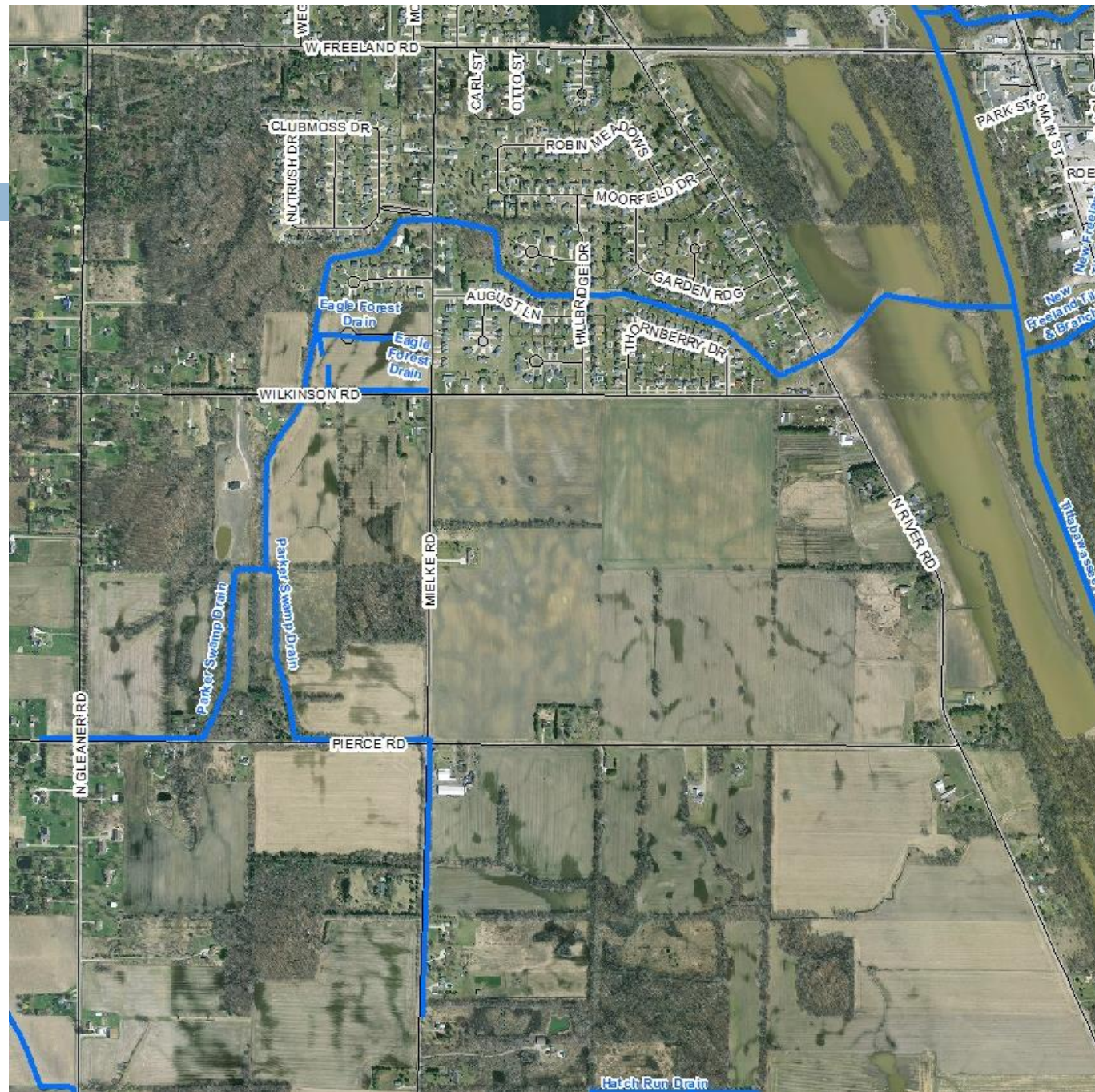
Public Comment (cont.)

- Briefly state your position on the petition for the Parker Swamp Drain. For example: “I support the petition for the Parker Swamp Drain because . . .” or “I oppose the petition for the Parker Swamp Drain because”
- Remember to stay on topic! Comments for tonight’s meeting are limited to the current petition for the Parker Swamp Drain only.
- The Public Works Commissioner’s staff will gladly speak with you on other topics after the conclusion of tonight’s meeting.

Drain Facts

- Parker Swamp Drain was established as a county drain in 1912.
- The drain was cleaned out via petition in 1966-67.
- Since 2014, we have received many calls in regards to trees/debris down in the drain blocking water flow, and major bank erosion.
- The current petition was filed on April 13, 2021. It was circulated by Melissa Hamilton for John Wirtz and was signed by 7 freeholders.

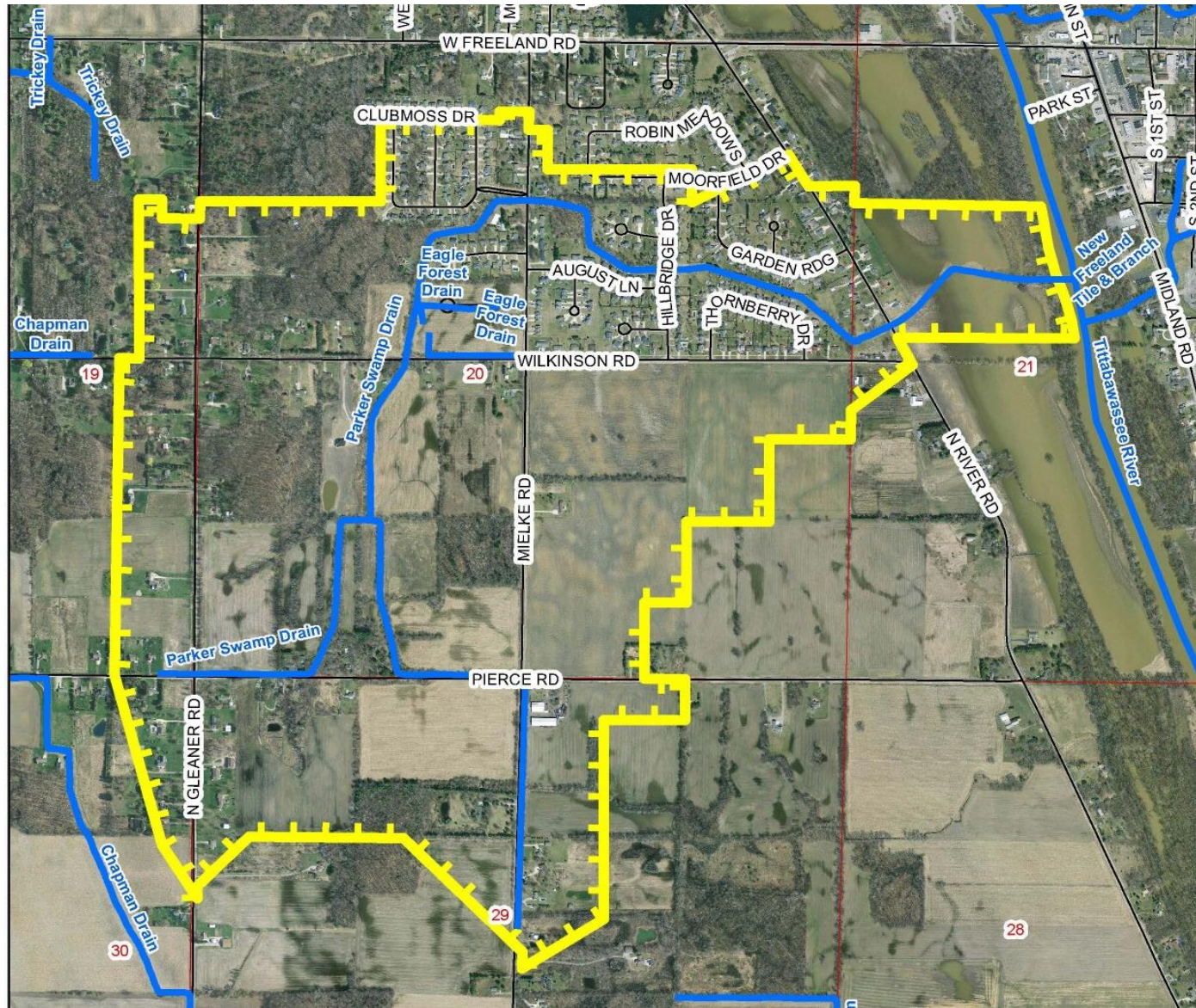
Drainage Location



Drain Facts Continued

- Location of Parker Swamp Drain
 - ▣ See Map
 - ▣ Approximately 15,765 feet long (2.9 miles)
 - ▣ Watershed area: Approx. 705 acres
- What is the drainage district?
 - ▣ Lands that contributes storm water to drain
 - ▣ Drainage District serves as the special assessment district
 - ▣ Parker Swamp Drain Drainage District includes:
 - Tittabawassee Township
 - Saginaw County
 - Landowners – Approximately 392 parcels

Drainage District Map



Drain Facts Continued

Winter 2014 – Drain maintenance completed.

- SCPWC cleared and cut trees from Hillbridge Drive east along north side of drains towards River Road. Spent \$9,600.



Drain Facts Continued

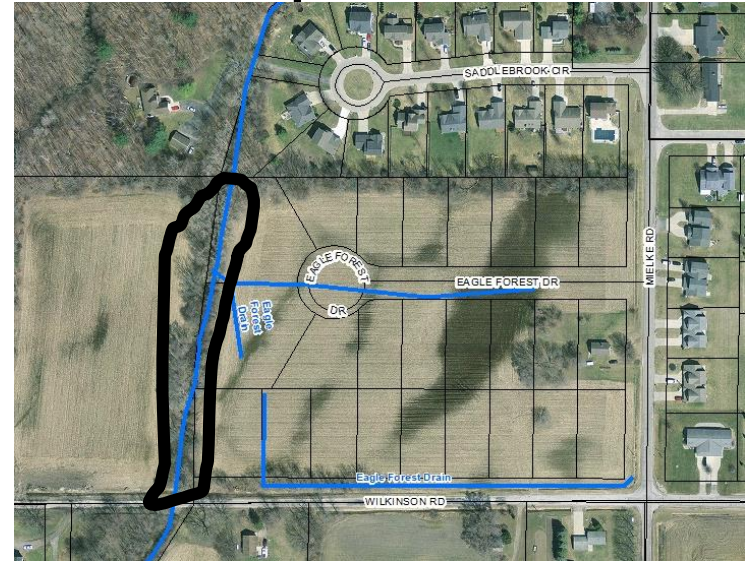
Winter 2014 – Drain maintenance in progress



Drain Facts Continued

Summer 2018 – Drain maintenance completed.

- ❑ SCPWC cleared and chipped some trees along west side of drain north of Wilkinson Road. Spent \$8,500



Summer 2020 – Drain maintenance completed.

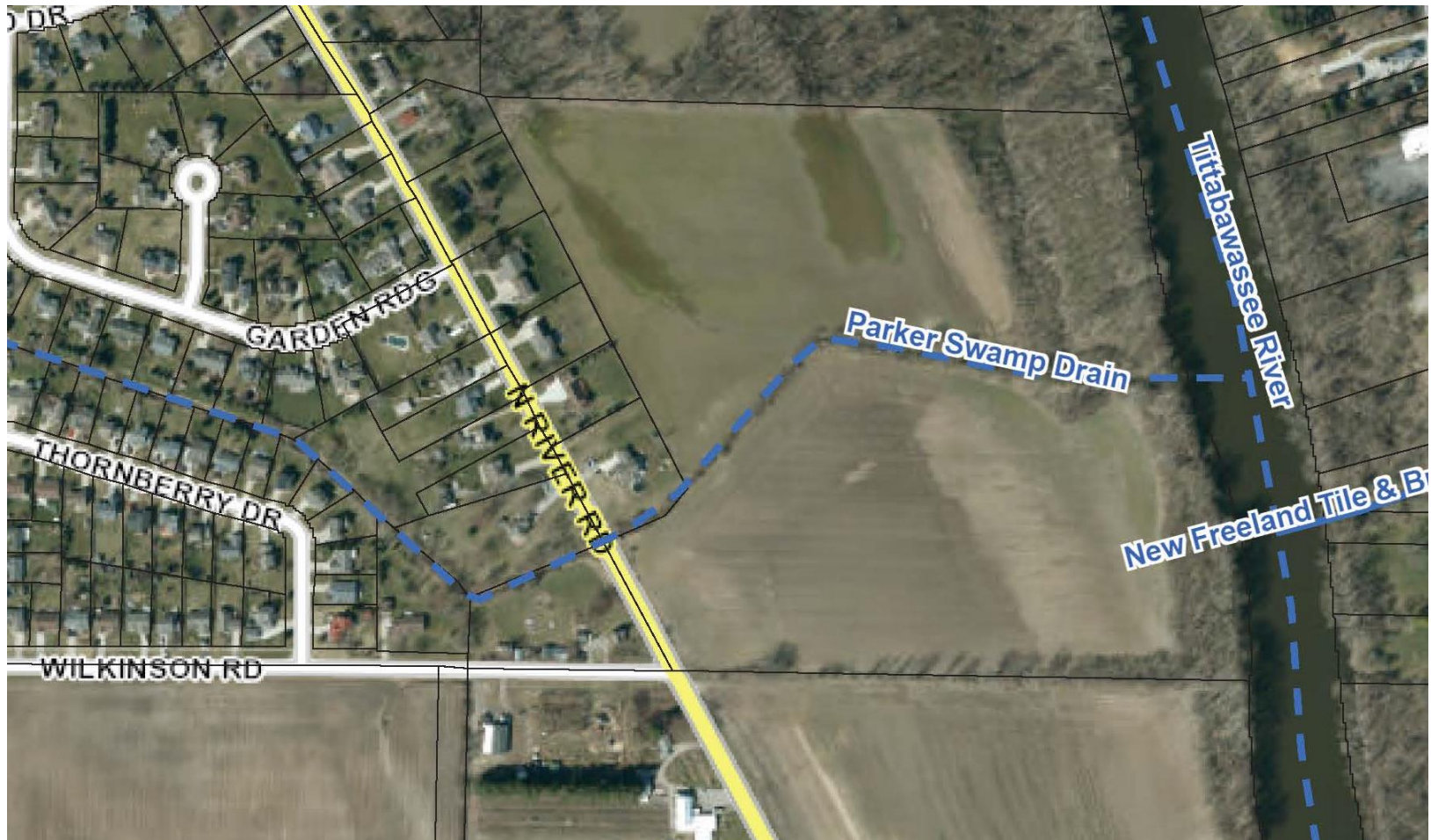
- ❑ SCPWC removed multiple log jams from the drain; sprayed portions of the drain for brush. Spent \$5,700

Drain Inspection

- On July 20, 2021 an engineering field review of the Drain (inspection from the road crossings only) was completed as a result of the petition filed with the Public Works Commissioner. The following was observed:
 - From River Road to the east, the drain flows through an agricultural area to outlet to the Tittabawassee River. The drain has trees and brush in and along it and bank/slope erosion was evident in multiple locations. There appeared to be little to no sediment in the drain in this area and a small base flow was evident. There was not sediment in the culvert under River Road.

Drain Inspection Continued

□ River Road to the East



Looking Downstream (East) from River Road Towards Tittabawassee River

Trees & brush
along drain, bank
erosion



Downstream (East) end of River Road Crossing

84-Inch (7-feet)
diameter,
concrete culvert;
No sediment in
culvert



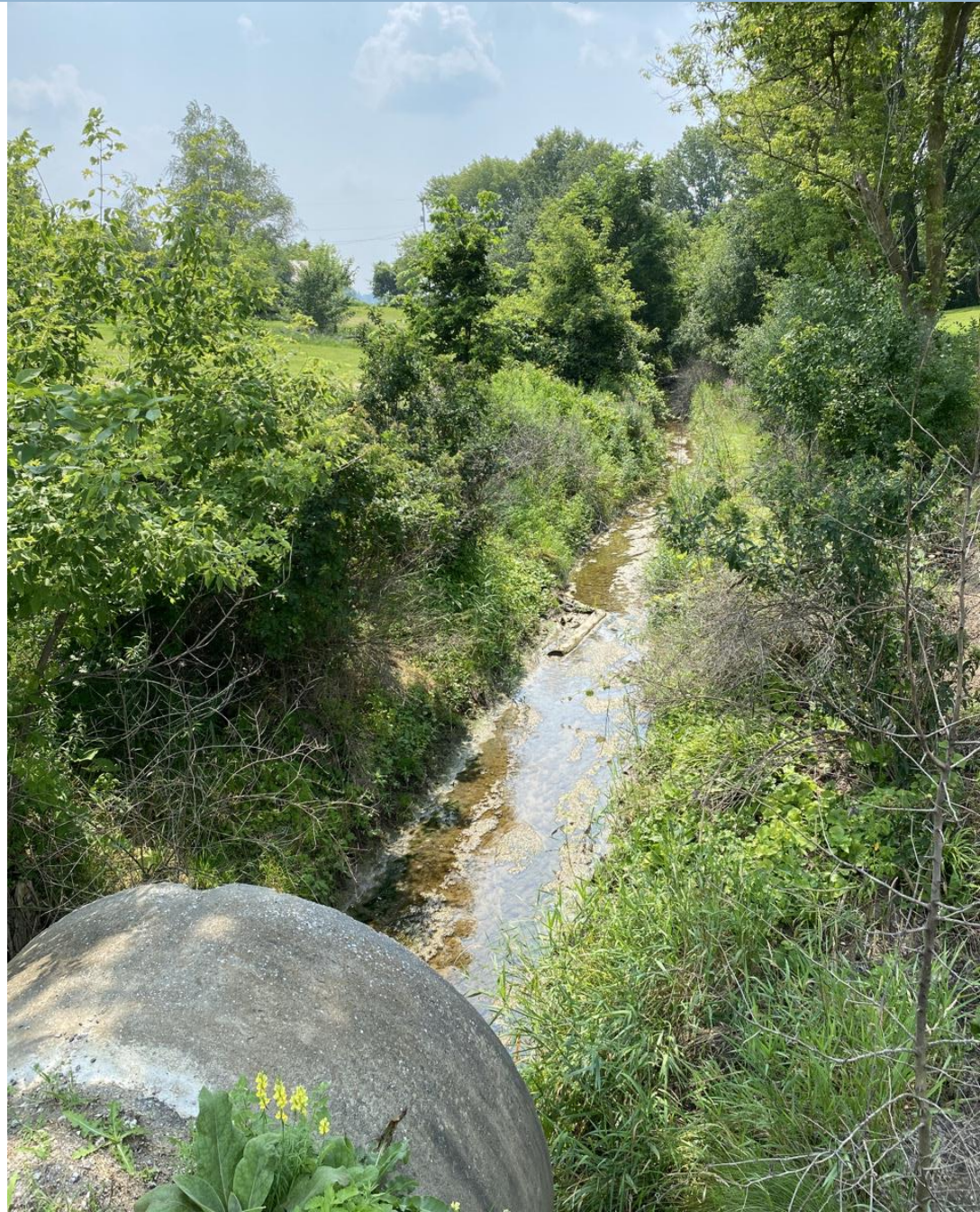
Drain Inspection Continued

- ❑ The middle portion of the drain, between River Road and Wilkinson Road, generally consists of a highly wooded corridor along dense residential neighborhoods. Many areas of bank erosion were evident. There appeared to be little to no sediment in the drain as noted in road culvert crossings. A small base flow was evident for much of the way, with more stagnant water in the upstream portion. There were many trees down in the drain.



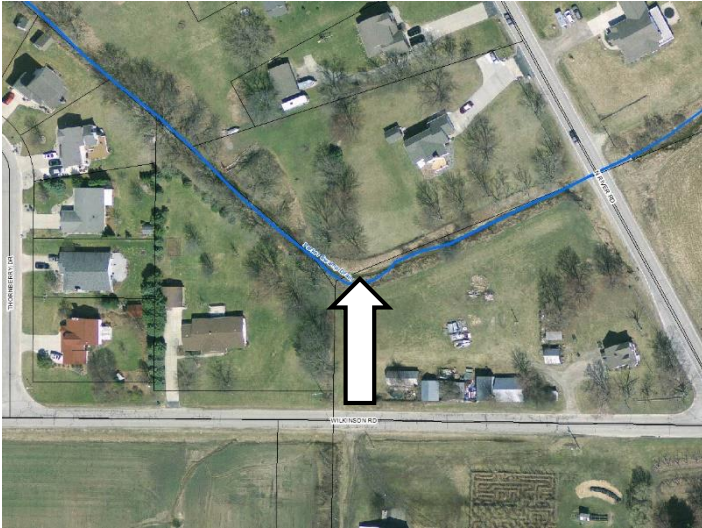
Looking upstream (West) from River Road Crossing

Trees & brush
along drain, no
sediment in
culvert, decent
base flow of
water



Looking upstream (West) along drain

Trees & brush in
and along drain



Looking downstream (East) along drain

Trees & brush in
and along
drain, garage
in drain ROW



Looking downstream (East) along Drain

Trees &
brush in
& along
drain
(North
side),
bank
erosion



Looking Downstream (East) from Hillbridge Drive

Trees & brush
along drain; Trees
previously
cleared on both
sides of the drain
in this area



Downstream (East) end of crossing at Hillbridge Drive

80-inch (6.67-foot) round metal culvert, little to no sediment in the culvert



Looking Upstream (West) from Hillbridge Drive

Wooded
corridor
along
drain
with nice
yards on
other
side of
trees



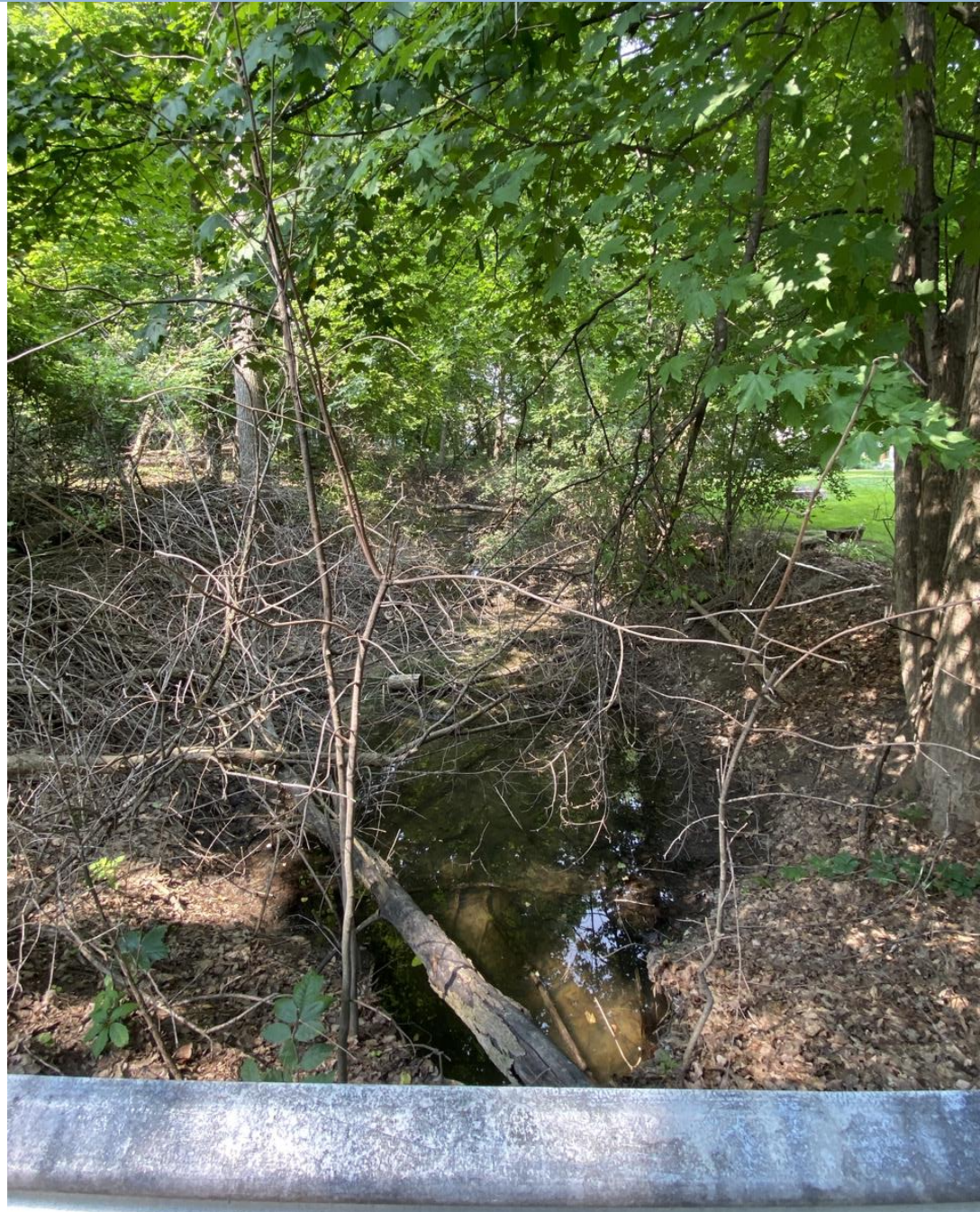
Looking Downstream (East) from Mielke Road

Drain runs through a
small woods, no
access along the
drain for
maintenance



Looking Downstream (North) from Saddlebrook Drive

Drain runs through a small woods, trees & brush in the drain; no access along the drain for maintenance



Looking Upstream (South) from Saddlebrook Drive



Looking Downstream (North) from Wilkinson Road

Some trees
previously removed
on West side of
drain, wooded
corridor along drain



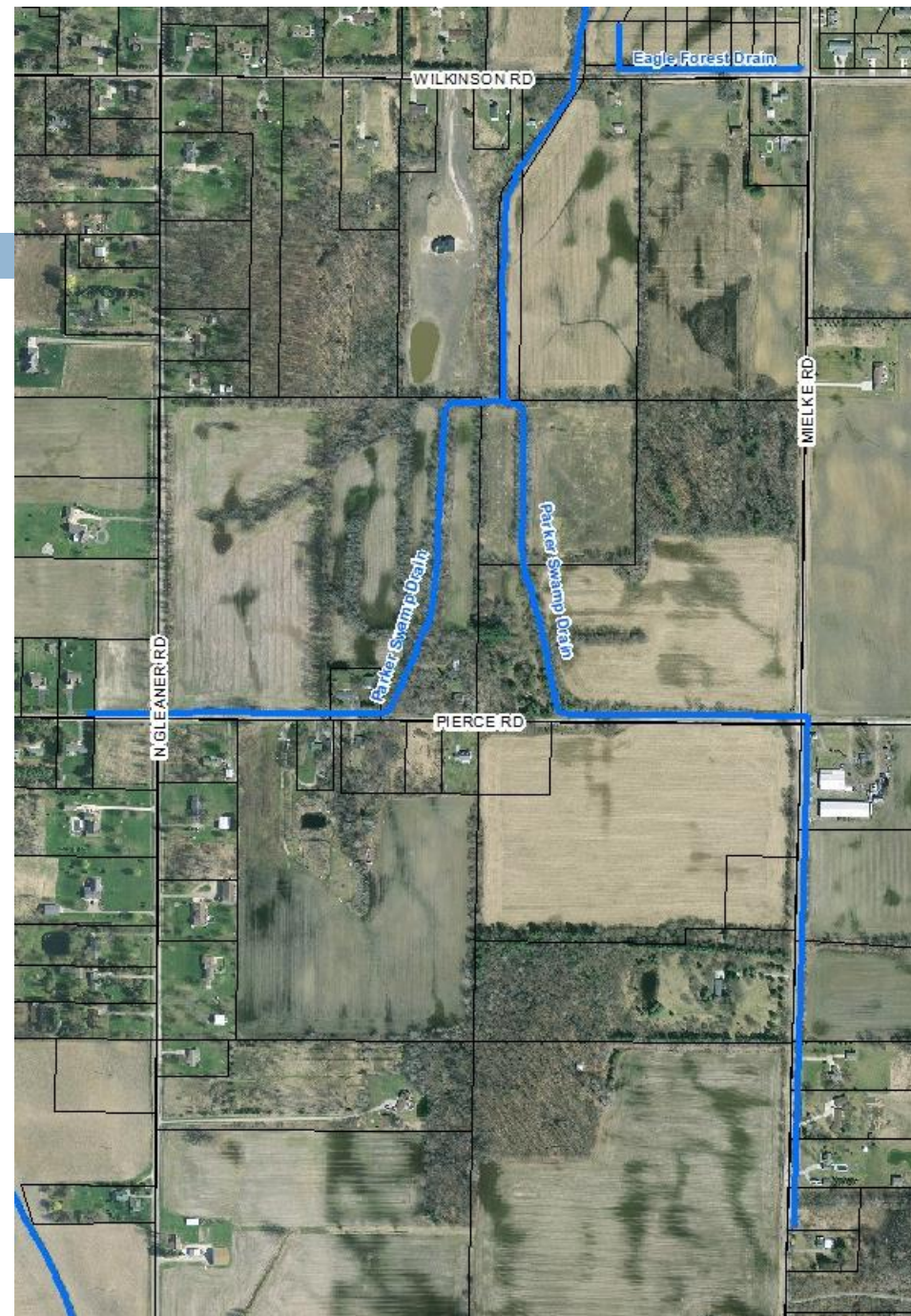
Downstream (North) end of crossing at Wilkinson Road

48-inch (4-feet)
round concrete
culvert, culvert
recently cleaned
out by road
commission with
road ditch project



Drain Inspection Continued

- ❑ The upstream portion of the drain, everything south of Wilkinson Road, generally consists of a highly wooded corridor along a mainly agricultural area. Stagnant water and high amounts of sediment were evident in the drain.

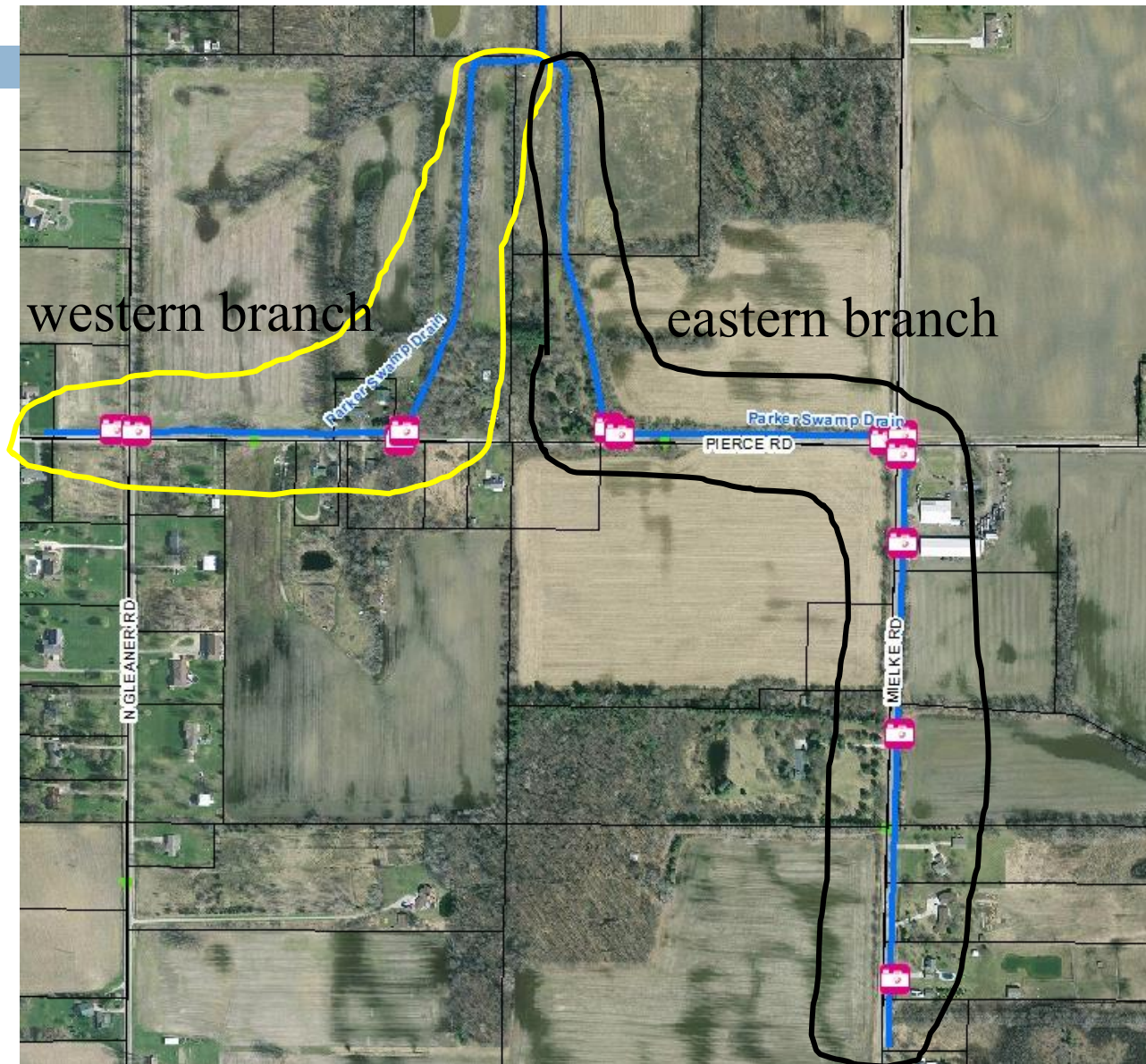


Looking Upstream (South) Wilkinson Road

Trees & brush
along drain



Drain Inspection Continued



Looking Downstream (North) from Pierce Rd. (Western Branch)

Drain through a
small wooded
area; trees down
in the drain



Looking Upstream (West) along Pierce Road (towards Gleaner)

Stagnant water



Looking Downstream (East) from Gleaner Road (along Pierce Road)

Drain has grass and some stands of cattails (evidence of stagnant water); drain side slopes appear stable

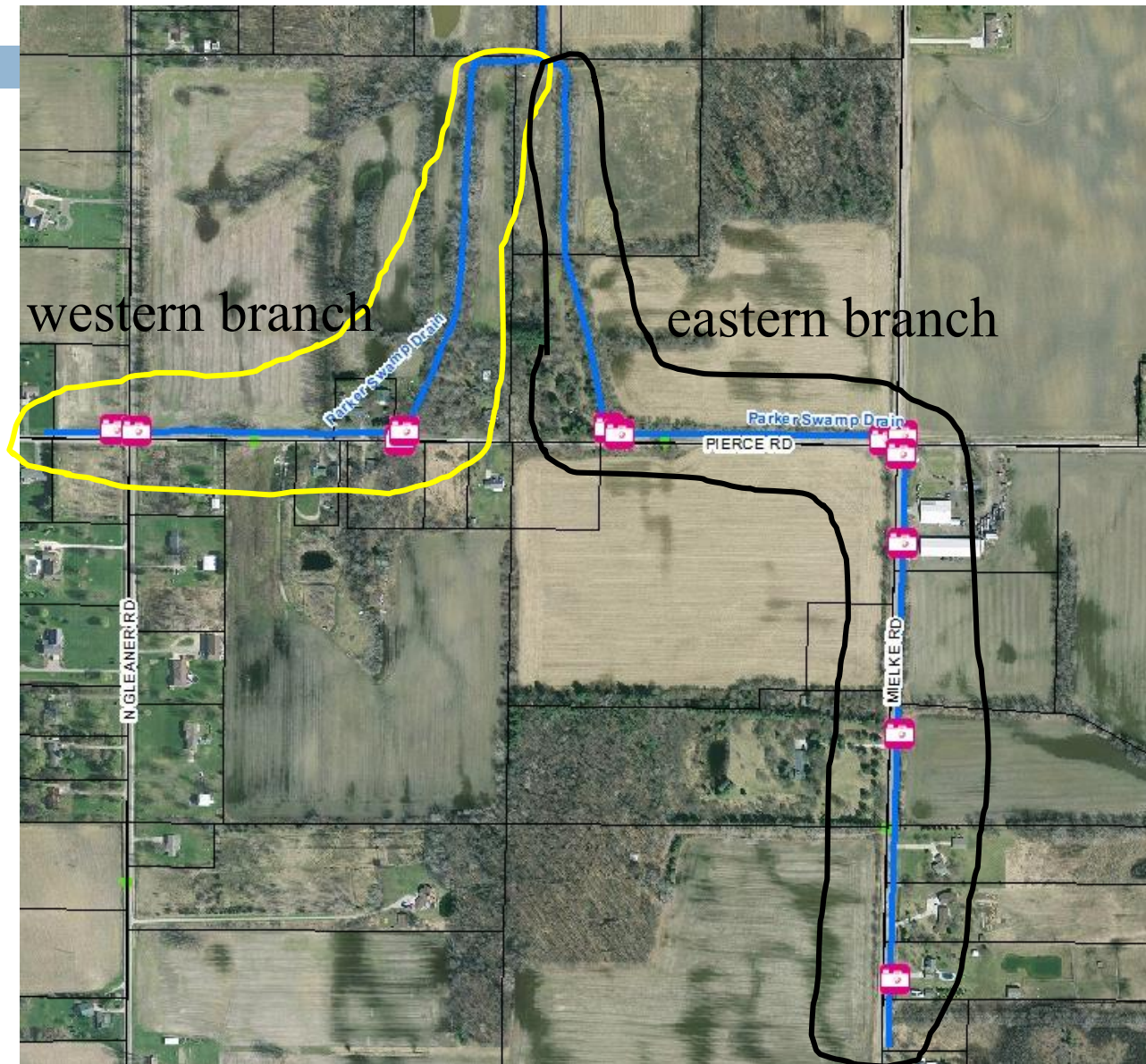


Looking Upstream (West) along Pierce Road from Gleaner Rd.

Stagnant water



Drain Inspection Continued



Looking Downstream (North) from Pierce Rd. (Eastern Branch)

Drain through a
small wooded
area; trees down
in the drain



Looking Upstream (East) along Pierce Road (towards Mielke)

Trees and brush along
north side of drain, lot
of
weeds/grass/sediment
in drain



Looking Downstream (West) from Mielke Rd. Along Pierce Rd. (Eastern Branch)

Thick grass in
drain, large
amount of
sediment, stagnant
water



Downstream (West) end of crossing at Mielke Road

24-inch (2-feet)
round concrete
culvert,
completely full of
sediment, large
sink hole above
by edge of road



Downstream end (North) of Pierce Rd. Crossing

36-inch diameter
(3-foot) round
concrete pipe,
pipe full of
sediment,
headwalls have
failed



Looking Upstream (South) from Pierce Rd. along Mielke Rd.

Thick grass, cattails
and sediment in
drain, stagnant
water



Looking Downstream (North) from last driveway crossing

Drain full of
cattails and
sediment



Drain Inspection Recap

- ❑ The downstream portion of the drain, north and east of Wilkinson Road, is generally a wooded corridor through a residential area, with many trees down in the drain and areas of bank erosion. There was little to no sediment accumulation in the drain bottom through this stretch, and good base water flow.
- ❑ The upstream portion of the drain was highly wooded, with many trees down in the drain. Where the drain runs along Pierce & Mielke Roads, it is full of vegetation and sediment, causing stagnant water.

Summary of Drain Finances

- ❑ Assessed \$20,000 in 2014 to pay for tree removal project near Hillbridge Drive and ongoing maintenance.
- ❑ Assessed \$7,500 in 2020 to pay for tree removal project north of Wilkinson and brush spraying.
- ❑ Drain account currently has approximately \$3,090.

Meeting Agenda

- ~~I. Introductions~~
- ~~II. Opening of Board of Determination Meeting~~
- ~~III. Outline of the Board of Determination Procedure~~
- ~~IV. Inspection Report~~
- V. Public Testimony - (3 minutes per person.)
- VI. Vote of Board of Determination
- VII. Appeal Procedures and Closing Comments
- VIII. Adjournment