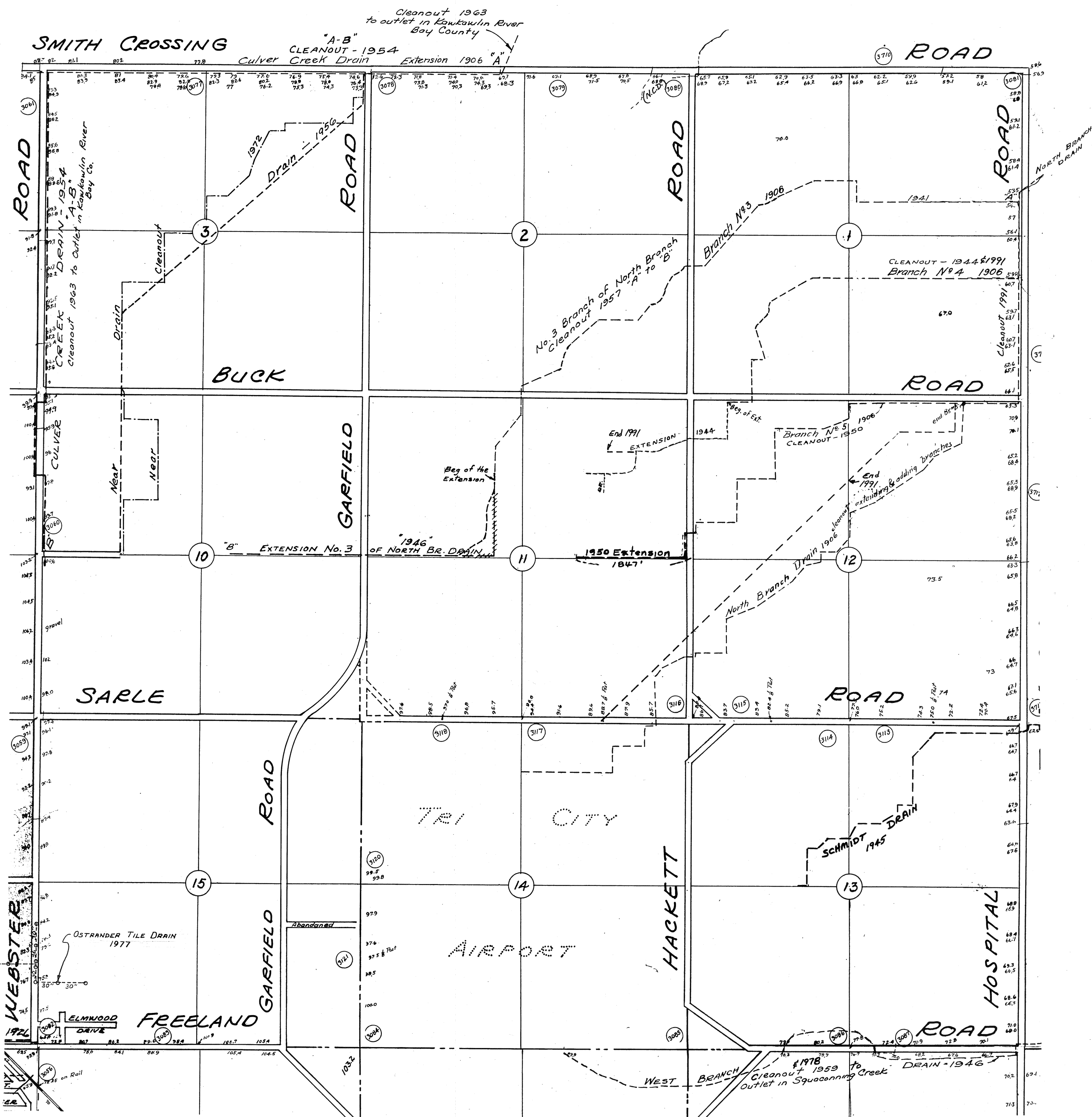


NE 1/4 TITTABAWASSEE TWP.

25 A

T. 13 N. - R. 3 E.



Cleanout 1963 to outlet in Kawtowin River Bay County

"A-B" CLEANOUT - 1954
Culver Creek Drain Extension 1906 "A"

SMITH CROSSING

3710 ROAD

ROAD

ROAD

ROAD

ROAD

BUCK

ROAD

GARFIELD

"B" EXTENSION No. 3

"1946" OF NORTH BR. DRAIN

1950 Extension 1847'

Reg. of Ext.

End 1991 EXTENSION

Branch No. 5 CLEANOUT - 1950

North Branch Drain 1906

ROAD

SARLE

ROAD

TRI

CITY

HACKETT

SCHMIDT 1945 DRAIN

WEBSTER

FREELAND

AIRPORT

HOSPITAL

ROAD

WEST BRANCH CLEANOUT 1959 to Outlet in Squawanning Creek DRAIN - 1946

N.C.D. = Not a County Drain

Revised 11-77 C.W.M. 7-95 DDE
3-89 D.D.E.

B-3364-94