

Little Eagle Creek Drain

Board of Determination

Lakefield Township Hall, 21050 Lakefield Road, Merrill

Tuesday, April 12, 2022

6:00 PM



Brian J. Wendling

Saginaw County Public Works Commissioner

Meeting Agenda

- I. Introduction
- II. Opening of Board of Determination Meeting
- III. Outline of the Board of Determination Procedure
- IV. Inspection Report
- V. Public Testimony - (3 minutes per person.)
- VI. Vote of Board of Determination
- VII. Appeal Procedures and Closing Comments
- VIII. Adjournment

Role of the B.O.D.

- The Board of Determination's role is to make one decision:
 1. If the project is necessary based on public health, convenience or welfare

- The Board of Determination DOES NOT decide:
 - ▣ The scope of the project
 - ▣ The cost of the project
 - ▣ How much property owners and municipalities are assessed for the project

Public Comment

- The speaking order will be on a first come, first served basis. Petitioner will have a chance to speak first.
- State your full name and address. Spell your last name for the court reporter.
- Limit comments to 3 minutes.

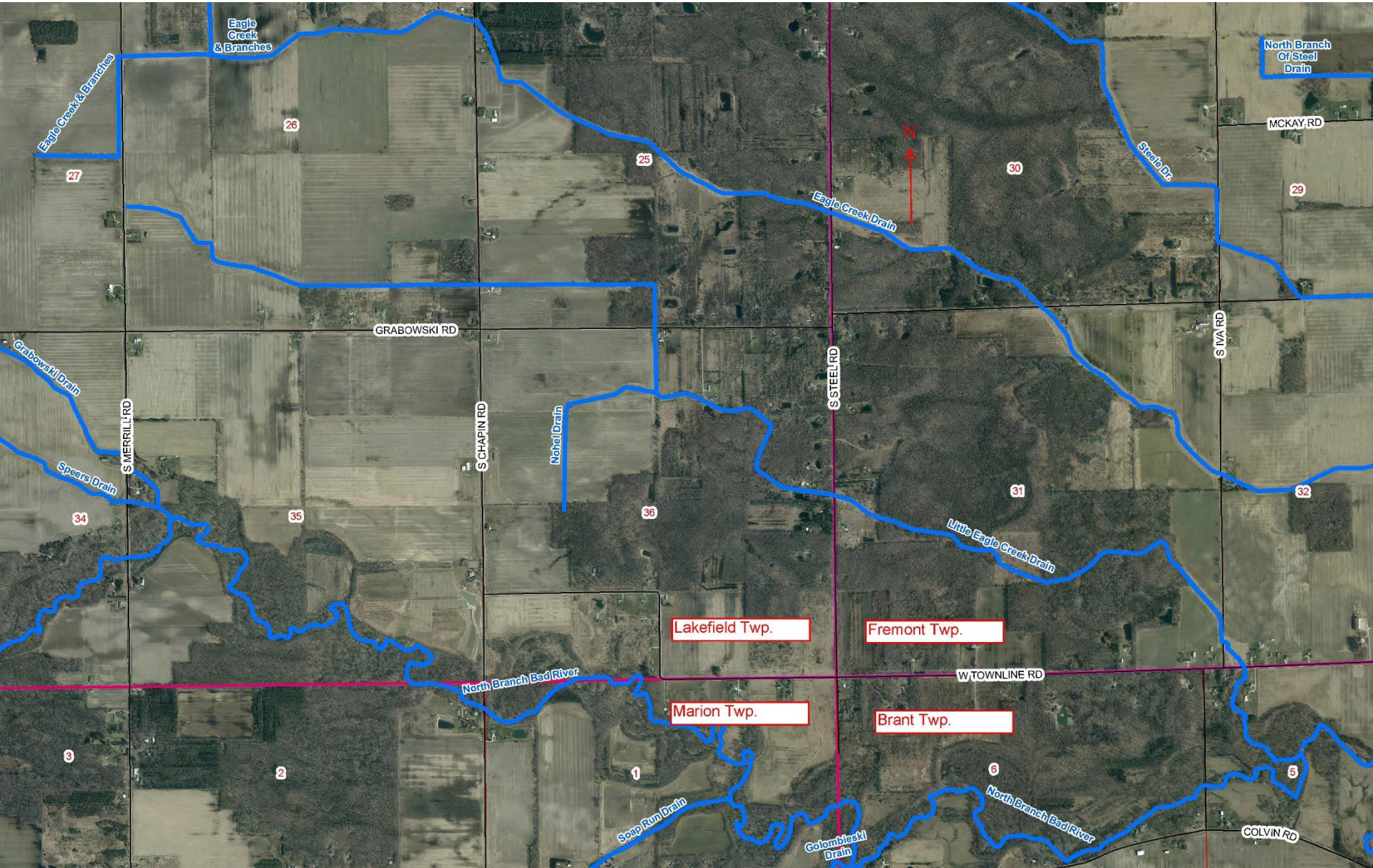
Public Comment (cont.)

- Briefly state your position on the petition for the Little Eagle Creek Drain. For example: “I support the petition for the Little Eagle Creek Drain because . . .” or “I oppose the petition for the Little Eagle Creek Drain because”
- Remember to stay on topic! Comments for tonight’s meeting are limited to the current petition for the Little Eagle Creek Drain only.
- The Public Works Commissioner’s staff will gladly speak with you on other topics after the conclusion of tonight’s meeting.

Drain Facts

- Little Eagle Creek Drain was established as a county drain in 1910.
- Portions of the drain were cleaned out via petitions in 1927 and 1951.
- We've received multiple complaints from landowners over the years requesting drain cleanout. Complaints include flooded driveway, ditch not draining, and field tiles under sediment. Drain inspections completed in 2014, 2017 and recently in 2022.
- The current petition was filed on January 12, 2022. It was circulated by Jeremy Overbeck for Larayne Leuenberger and was signed by 7 freeholders.

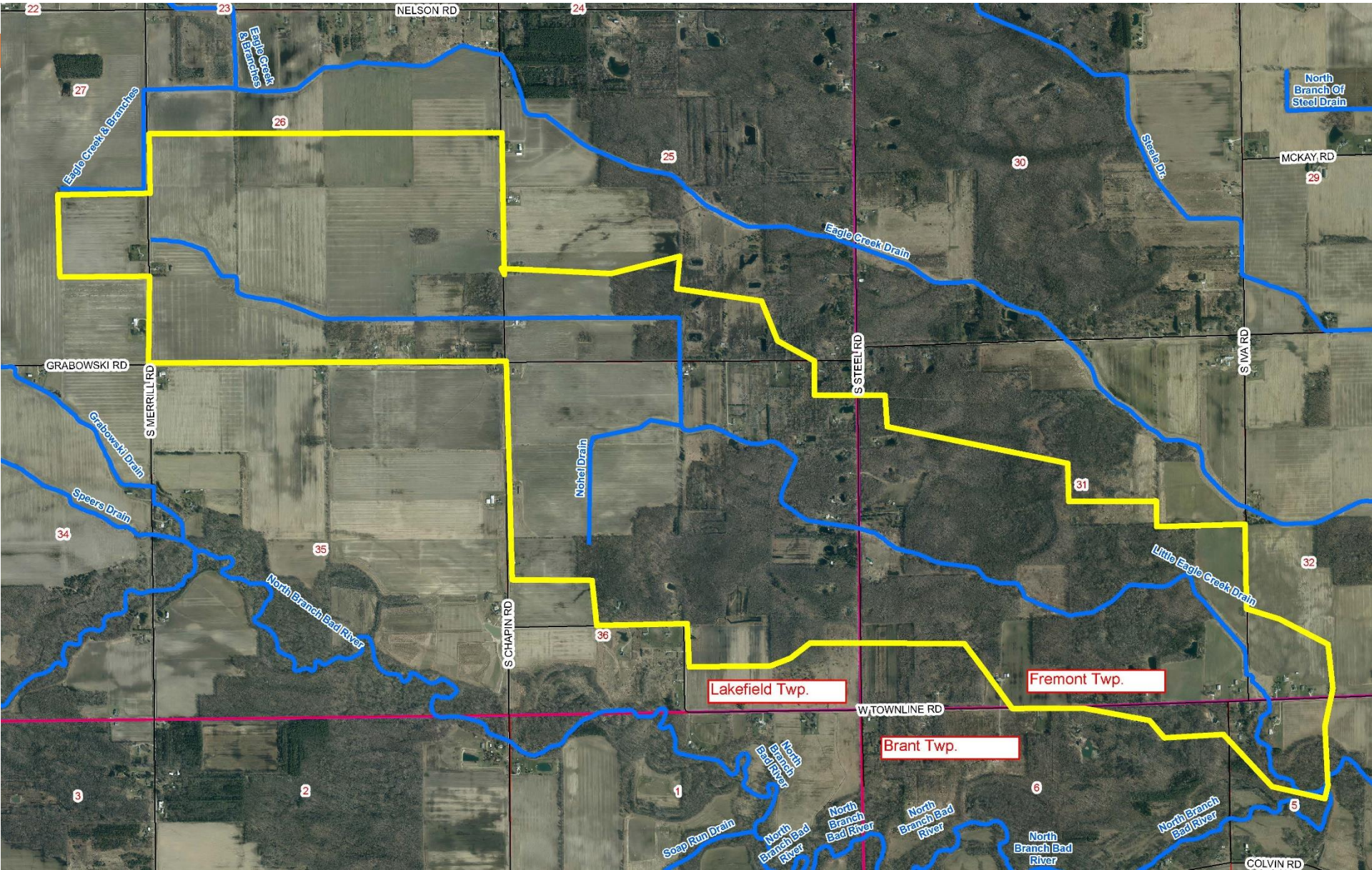
Drainage Location



Drain Facts Continued

- Location of Little Eagle Creek Drain
 - ▣ See Map
 - ▣ Approximately 23,000 feet long (4.35 miles)
 - ▣ Historical Watershed Area: Approx. 1,560 acres
- What is the drainage district?
 - ▣ Lands that contributes storm water to drain
 - ▣ Drainage District serves as the special assessment district
 - ▣ Little Eagle Creek Drain Drainage District includes:
 - Brant, Fremont & Lakefield Townships
 - Saginaw County
 - Landowners – Approximately 95 parcels in district

Drainage District Map

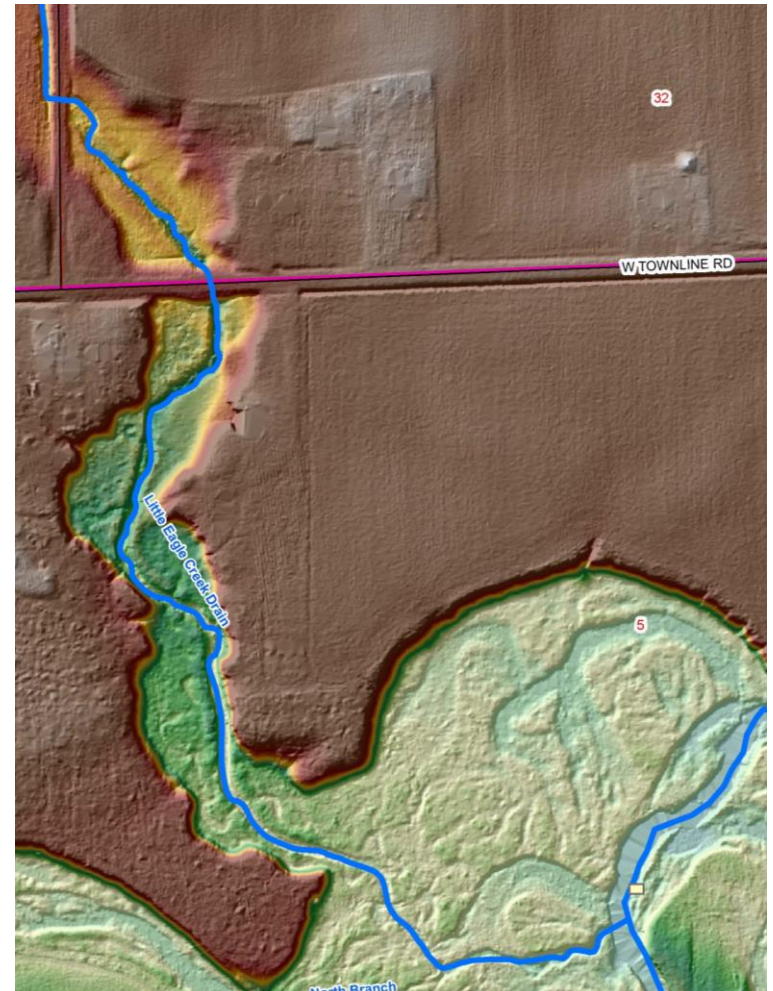
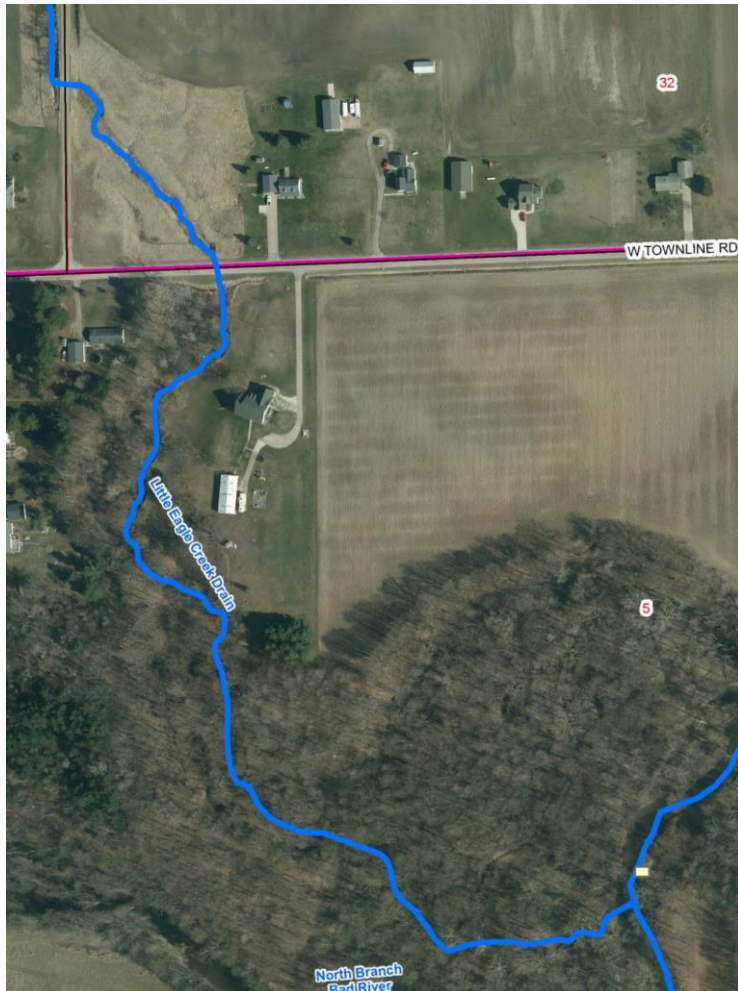


Drain Inspection

- On April 7, 2022 an engineering field review of the Drain (inspection from the road crossings only) was completed as a result of the petition filed with the Public Works Commissioner. The following was observed:
 - There was good water flow in the downstream stretch at Iva & Townline Road Crossings.
 - The middle section of the drain is highly wooded for approx. 9,000 feet (1.7 miles).
 - There was standing water at Steel, Grabowski & Chapin Road Crossings.

Drain Inspection Continued

- Iva Road & Townline Road, south to North Br. Bad River

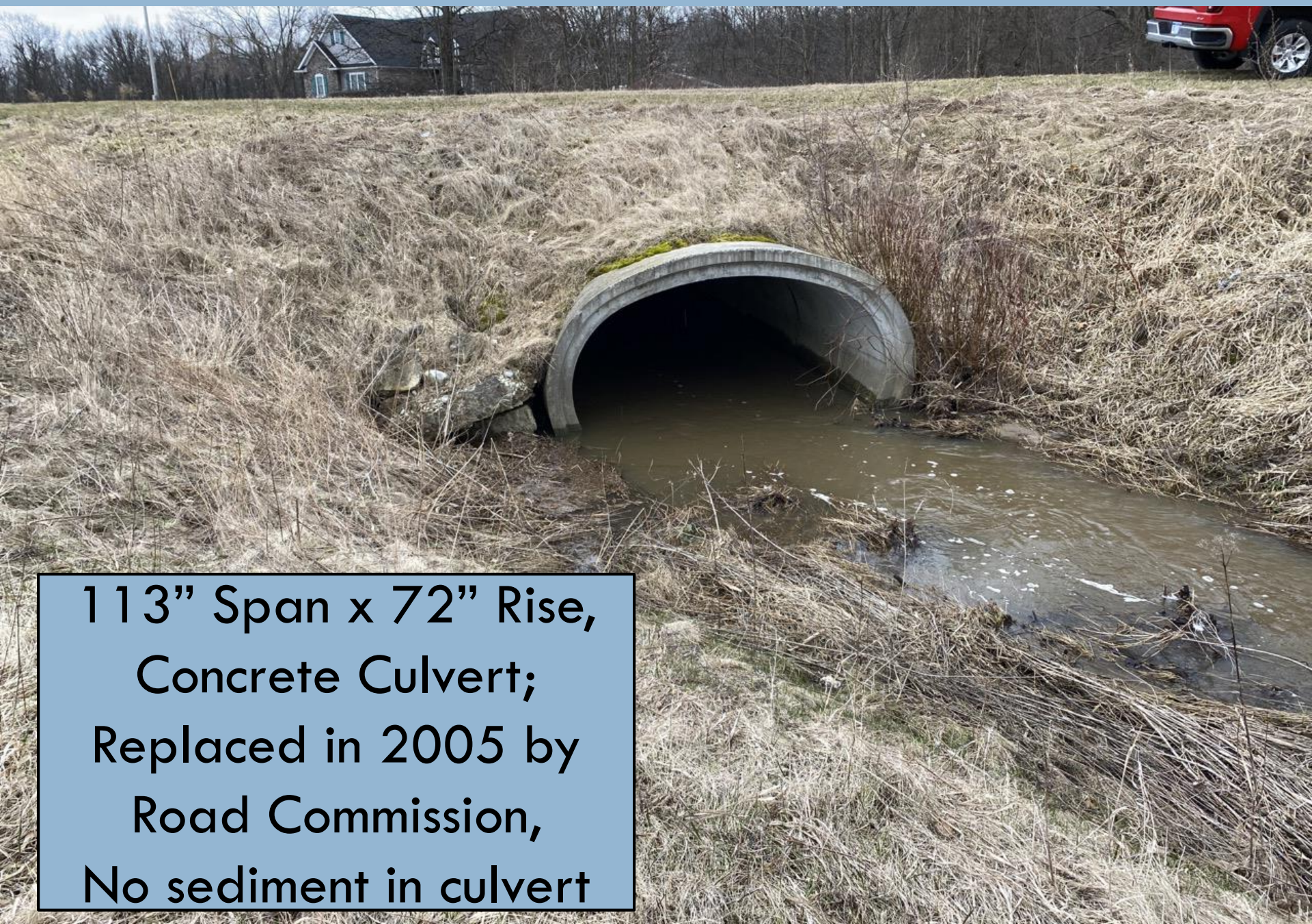


Looking Downstream (South) from Townline Rd Towards North Branch of Bad River

Trees & brush
along drain, good
water flow



Upstream (North) end of Townline Road Crossing



113" Span x 72" Rise,
Concrete Culvert;
Replaced in 2005 by
Road Commission,
No sediment in culvert

Looking Upstream (North) from Townline Rd Towards Iva Road



Good water flow

Looking Downstream (South) from Iva Rd Towards Townline Rd.



Good water flow

Looking Upstream from Iva Rd.



Good water flow,
trees and brush

East end of Iva Road Crossing



Drain Inspection Continued

Between Grabowski Road, Steel Road & Iva Road



Looking downstream (East) from Steel Road Crossing



Trees & brush, lot
of standing water

Looking upstream (West) from Steel Road

Standing Water

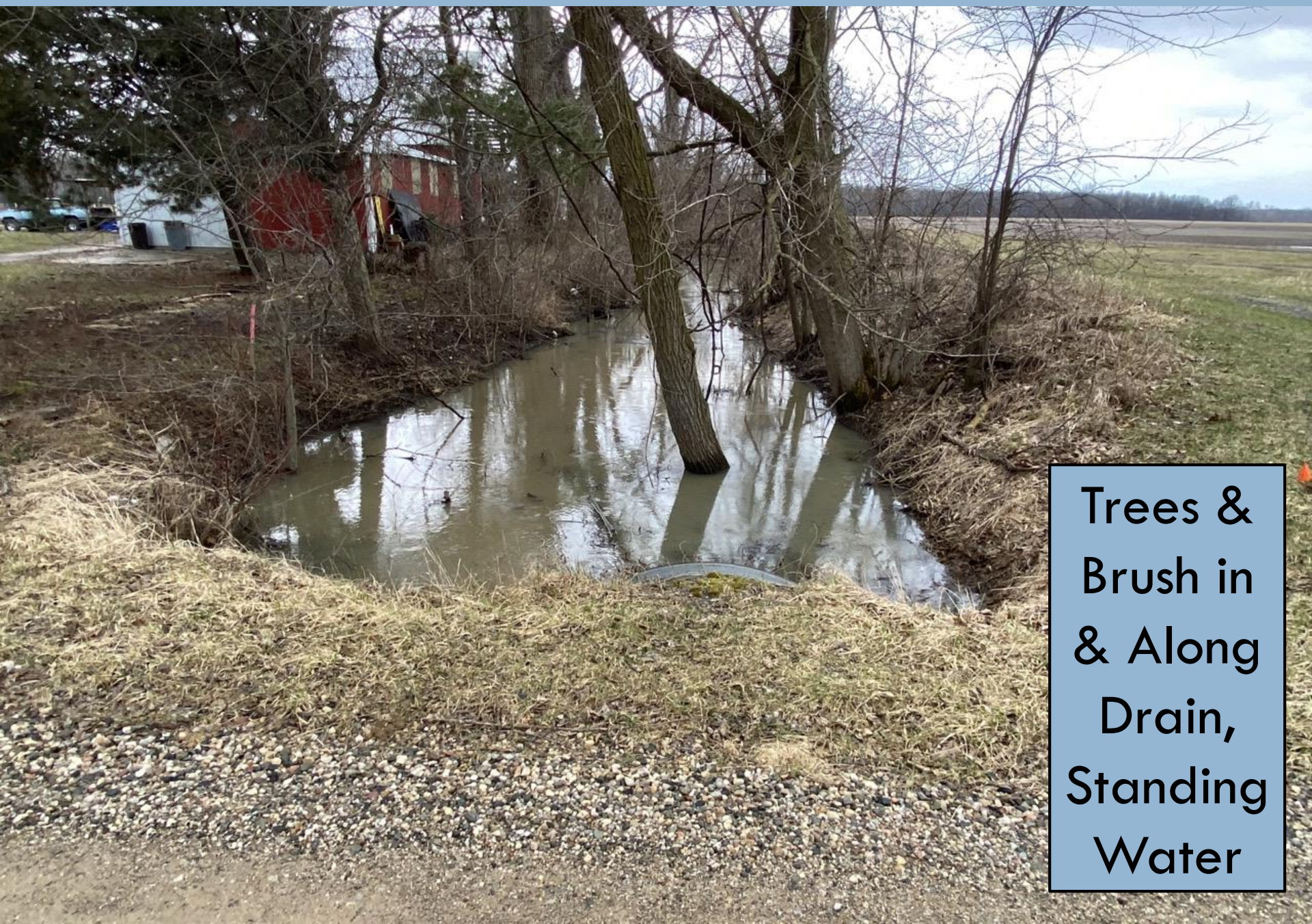


West end of Steel Road Culvert



Standing Water

Looking Downstream (South) From Grabowski Road



Trees &
Brush in
& Along
Drain,
Standing
Water

Looking Upstream (North) from Grabowski Drive



Trees & brush in and
along drain, Road
Ditches recently cleaned

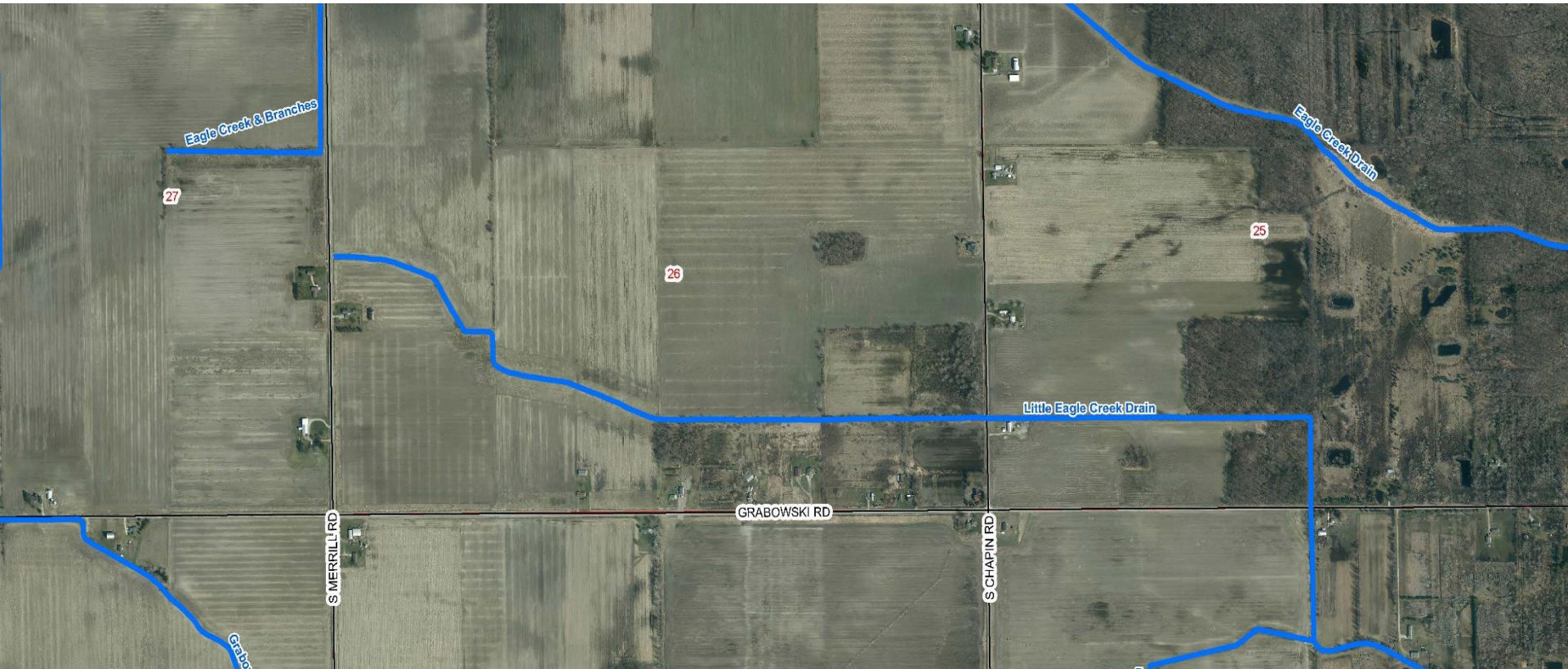
Downstream (South) end of Grabowski Road



Standing Water

Drain Inspection Continued

- Between Merrill Road and Grabowski Road



Looking Downstream (East) from Chapin Road



Road Culvert is
66" diameter
metal (replaced
in 2000 by SCRC)



Looking Upstream (West) from Chapin Road



Standing Water,
Trees/Brush in Drain

Drain Inspection Recap

- ❑ There was good water flow in the downstream stretch at Iva & Townline Road Crossings.
- ❑ The middle section of the drain is highly wooded for approx. 9,000 feet (1.7 miles). There may be trees down in the drain, or growing in the drain, through the wooded areas causing drain to hold water upstream.
- ❑ There was standing water at Steel, Grabowski & Chapin Road Crossings.

Summary of Drain Finances

- Drain account currently has approximately **-\$400**.

Meeting Agenda

- ~~I. Introductions~~
- ~~II. Opening of Board of Determination Meeting~~
- ~~III. Outline of the Board of Determination Procedure~~
- ~~IV. Inspection Report~~
- V. Public Testimony - (3 minutes per person.)
- VI. Vote of Board of Determination
- VII. Appeal Procedures and Closing Comments
- VIII. Adjournment